

SERIE **XP** TANDEM

3.1.2.3.

CODICE DI ORDINAZIONE / DECODING

3.1.2.3 . XXX . X . 0 . 1 . 0

UNI
21-222

XP 15X
XP 22X
XP 36X
XP 43X
XP 57X
XP 65X
XP 75X
XP 83X

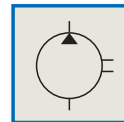
ALLESTIMENTI SPECIALI/SPECIAL OPTIONS
1 = MONTAGGIO IN TANDEM/TANDEM FITTING

ROTAZIONE/ROTATION
1 = SINISTRO/ANTICLOCKWISE
2 = DESTRO/CLOCKWISE

CILINDRATA/DISPLACEMENT

CODICE BASE/BASIC CODE

Pompa ad Ingranaggi
Gear Pump

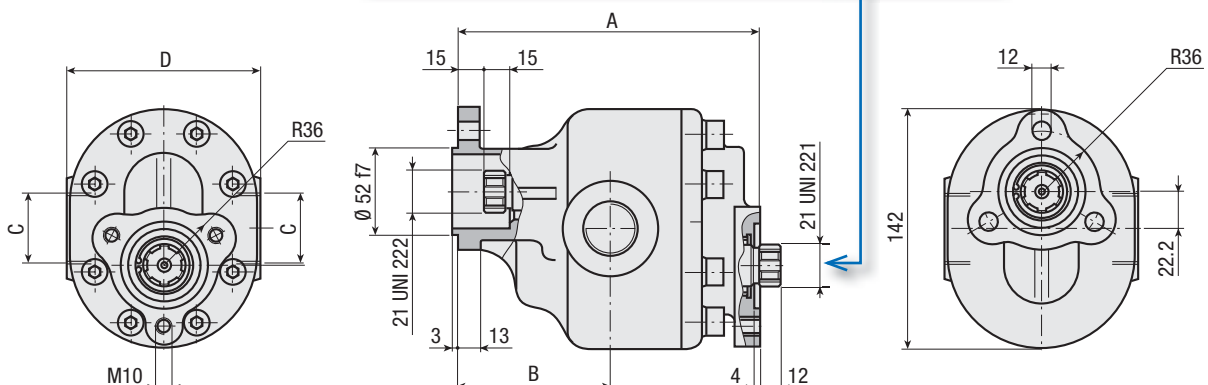


CARATTERISTICHE E DATI TECNICI / SPECIFICATIONS AND TECHNICAL DATA

TIPO TYPE	CODICE CODE	CILINDRATA DISPLACEMENT cm ³ /rev.	A mm	B mm	C	D mm	PESO WEIGHT kg
XP 15X	3.1.2.3.015.X.0.1.0	15	144	76	3/4" G	116	6.75
XP 22X	3.1.2.3.022.X.0.1.0	22	149	76	3/4" G	116	7.25
XP 36X	3.1.2.3.036.X.0.1.0	36	159	76	3/4" G	116	8.15
XP 43X	3.1.2.3.043.X.0.1.0	43	164	90.5	1" G	116	8.65
XP 57X	3.1.2.3.057.X.0.1.0	57	174	90.5	1" G	116	9.55
XP 65X	3.1.2.3.065.X.0.1.0	65	179	90.5	1" G	116	9.95
XP 75X	3.1.2.3.075.X.0.1.0	75	187	90.5	1" G	116	10.65
XP 83X	3.1.2.3.083.X.0.1.0	83	194	90.5	1" G	116	11.25

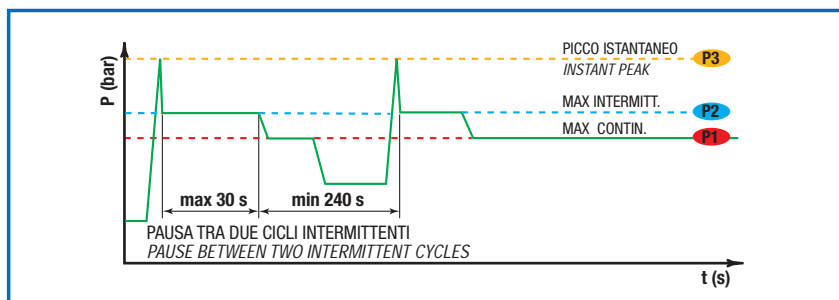
KIT ACCOPIAMENTO POSTERIORE
REAR MOUNTING KIT

2.05.P002.0000



DATI TECNICI / TECHNICAL DATA

ESEMPIO CICLI LAVORO / EXAMPLE OF WORKING CYCLES



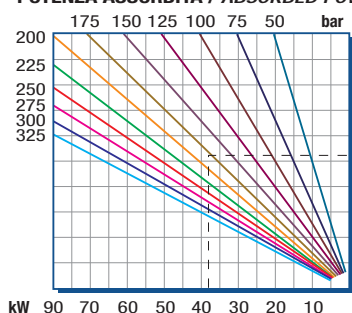
Pressione d'aspirazione: <i>Inlet pressure:</i>	0.7 ÷ 1.5 bar (assoluti/absolute)
Campo viscosità lavoro: <i>Operating viscosity range:</i>	12 ÷ 100 cSt
Temperatura fluido °C (t): <i>Fluid temperature °C (t):</i>	-10° + 80° C

Pressione Lavoro <i>Working Press.</i>	P2	Contaminazione / <i>Contamination</i>		Filtro / <i>Filter</i> βx = 75
		NAS 1638	ISO 4406	
≤ 200 bar		12	21/18	40 μm
≥ 200 bar		11	20/17	25 μm

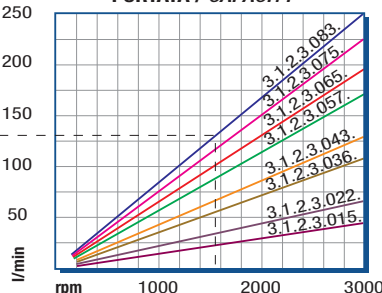
◀ **FILTRAZIONE CONSIGLIATA (ritorno o mandata)**
RECOMMENDED FILTERING (return or outlet)

TIPO / <i>TYPE</i>			XP 15X	XP 22X	XP 36X	XP 43X	XP 57X	XP 65X	XP 75X	XP 83X
Cilindrata <i>Displacement</i>	Vg	cm ³ /n cm ³ /rev.	15	22	36	43	57	65	75	83
Pressione massima continua <i>Max continuous operating pressure</i>		P1	315	305	300	280	260	240	220	210
Pressione massima intermittente <i>Max intermitt. operating pressure</i>	(max 30 s)	P2	340	330	325	305	285	265	240	230
Pressione massima di picco <i>Max peak pressure</i>	(≤ 0.1 s)	P3	450	450	450	400	380	350	320	300
Velocità massima intermittente <i>Max intermittent speed</i>	(P ≤ 20 bar)	n3	3000	3000	3000	3000	3000	3000	3000	3000
Velocità massima continua <i>Max continuous speed</i>	(≤ P1)	n1	2500	2500	2500	2500	2500	2500	2500	2500
Velocità minima intermittente <i>Min intermittent speed</i>	(≤ P2 x 0.5) (max 30 s)	n4	450	450	350	350	300	300	300	300

POTENZA ASSORBITA / ABSORBED POWER



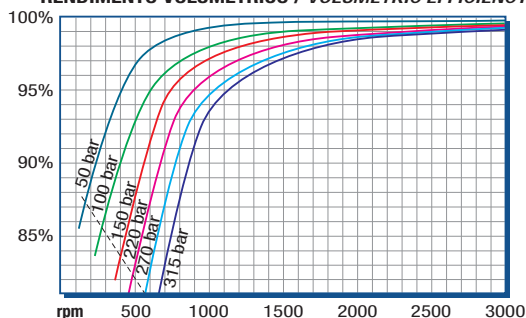
PORTATA / CAPACITY



RILIEVI ESEGUITI CON OLIO
ISO VG 46 A 50° C (ν=30 cSt)
THE ABOVE SPECIFICATIONS
REFER TO OIL TYPE ISO
VG 46 AT 50° C (ν=30 cSt)

DIAGRAMMI / DIAGRAMS

RENDIMENTO VOLUMETRICO / VOLUMETRIC EFFICIENCY



COPPIA ASSORBITA / INPUT TORQUE

