

# SERIE XP-4D 3.1.7.1.

CODICE DI ORDINAZIONE / DECODING

3.1.7.1 . XXX . X . 0 . X . 0

**DIN**  
5 4 6 2  
**SE**

XP-4D 15  
XP-4D 22  
XP-4D 36  
XP-4D 43  
XP-4D 57  
XP-4D 65  
XP-4D 83  
XP-4D 102

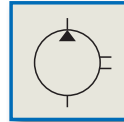
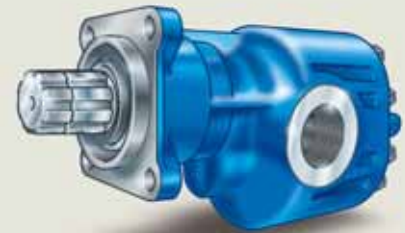
ALLESTIMENTI SPECIALI/SPECIAL OPTIONS  
0 = NON RICHiesto/STANDARD OPTION  
7 = ASPIRAZIONE LATERALE - MANDATA IN TESTA  
SIDE INLET - REAR OUTLET

ROTAZIONE/ROTATION  
1 = SINISTRO/ANTICLOCKWISE  
2 = DESTRO/CLOCKWISE

CILINDRATA/DISPLACEMENT

CODICE BASE/BASIC CODE

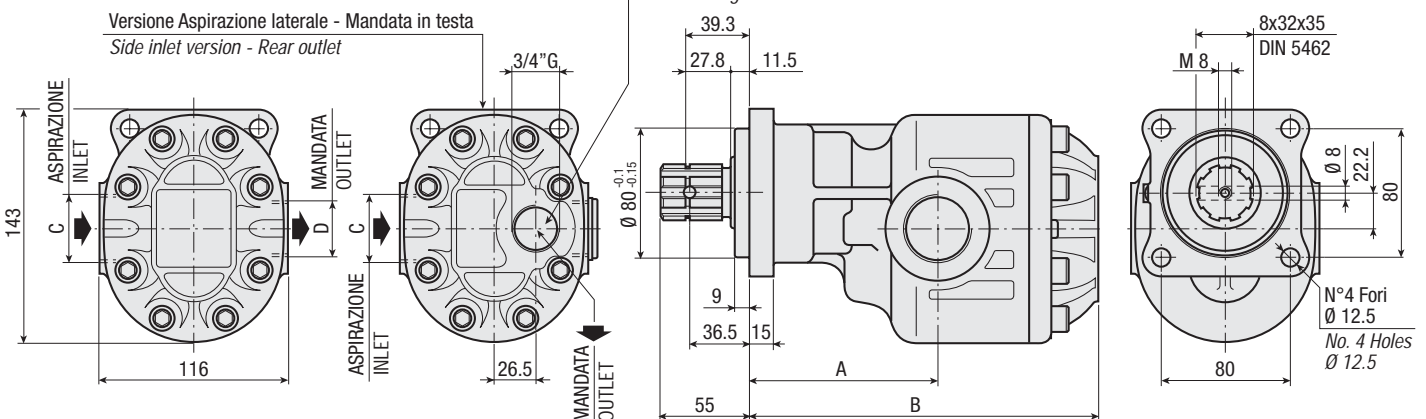
Pompa ad Ingranaggi  
Gear Pump



## CARATTERISTICHE E DATI TECNICI / SPECIFICATIONS AND TECHNICAL DATA

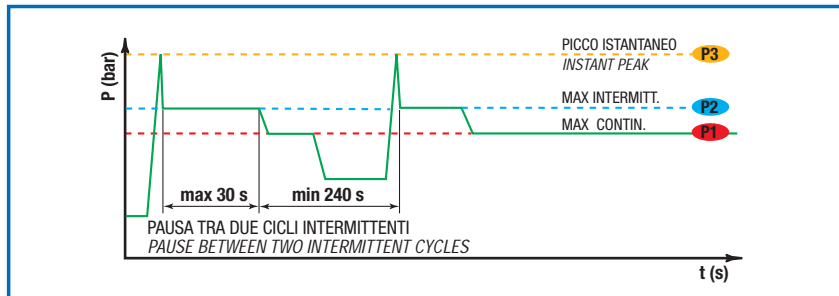
TIPO TYPE	CODICE CODE	CILINDRATA DISPLACEMENT cm <sup>3</sup> /rev.	A mm	B mm	C ASPIRAZIONE INLET	D MANDATA OUTLET	PESO WEIGHT kg
XP-4D 15	3.1.7.1.015.X.0.X.0	15	102	167	3/4" G	3/4" G	9.6
XP-4D 22	3.1.7.1.022.X.0.X.0	22	102	172	3/4" G	3/4" G	10.1
XP-4D 36	3.1.7.1.036.X.0.X.0	36	107	182	1" G	1" G	11.0
XP-4D 43	3.1.7.1.043.X.0.X.0	43	107	187	1" G	1" G	11.5
XP-4D 57	3.1.7.1.057.X.0.X.0	57	117	197	1" G	1" G	12.4
XP-4D 65	3.1.7.1.065.X.0.X.0	65	117	202	1" G	1" G	12.8
XP-4D 83	3.1.7.1.083.X.0.X.0	83	117	217	1" 1/4 G	1" G	14.1
XP-4D 102	3.1.7.1.102.X.0.X.0	102	117	229	1" 1/4 G	1" G	15.1

Corredato di: Tappo cod. 0.12.01.108.000 + Rondella cod. 0.04.01.157.000  
Included: Plug code 0.12.01.108.000 + Washer code 0.04.01.157.000



**DATI TECNICI / TECHNICAL DATA**

**ESEMPIO CICLI LAVORO / EXAMPLE OF WORKING CYCLES**



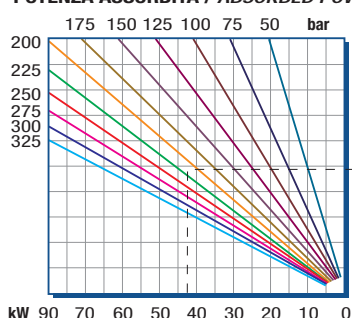
Pressione d'aspirazione: <i>Inlet pressure:</i>	0.7 ÷ 1.5 bar (assoluti/absolute)
Campo viscosità lavoro: <i>Operating viscosity range:</i>	12 ÷ 100 cSt
Temperatura fluido °C (t): <i>Fluid temperature °C (t):</i>	-10° + 80° C

Pressione Lavoro <i>Working Press.</i>	P2	Contaminazione / <i>Contamination</i>		Filtro / <i>Filter</i> βx = 75
		NAS 1638	ISO 4406	
≤ 200 bar		12	21/18	40 μm
≥ 200 bar		11	20/17	25 μm

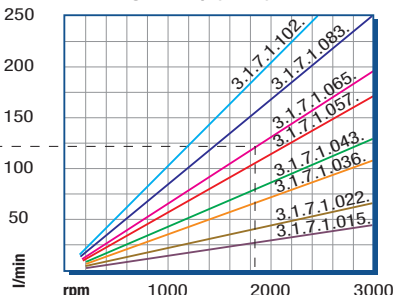
◀ **FILTRAZIONE CONSIGLIATA (ritorno o mandata)**  
*RECOMMENDED FILTERING (return or outlet)*

TIPO / <i>TYPE</i>			XP-4D 15	XP-4D 22	XP-4D 36	XP-4D 43	XP-4D 57	XP-4D 65	XP-4D 83	XP-4D 102
Cilindrata <i>Displacement</i>	Vg	cm <sup>3</sup> /n cm <sup>3</sup> /rev.	15	22	36	43	57	65	84	102
Pressione massima continua <i>Max continuous operating pressure</i>	P1		315	305	300	280	240	220	210	180
Pressione massima intermittente <i>Max intermitt. operating pressure</i>	(max 30 s)	P2	340	330	325	305	285	265	240	200
Pressione massima di picco <i>Max peak pressure</i>	(≤ 0.1 s)	P3	450	450	450	400	380	330	300	250
Velocità massima intermittente <i>Max intermittent speed</i>	(P ≤ 20 bar)	n3	3000	3000	3000	3000	3000	3000	3000	2500
Velocità massima continua <i>Max continuous speed</i>	(≤ P1)	n1	2500	2500	2500	2500	2500	2500	2500	2000
Velocità minima intermittente <i>Min intermittent speed</i>	(≤ P2 x 0.5) (max 30 s)	n4	500	500	450	450	450	400	400	400

**POTENZA ASSORBITA / ABSORBED POWER**



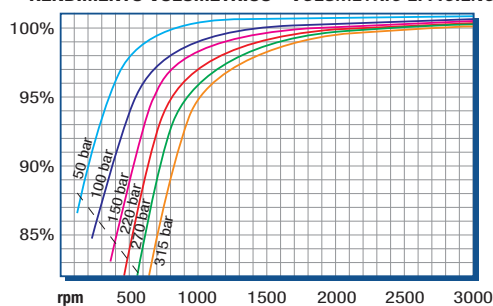
**PORTATA / CAPACITY**



RILIEVI ESEGUITI CON OLIO  
ISO VG 46 A 50° C (ν=30 cSt)  
THE ABOVE SPECIFICATIONS  
REFER TO OIL TYPE ISO  
VG 46 AT 50° C (ν=30 cSt)

**DIAGRAMMI / DIAGRAMS**

**RENDIMENTO VOLUMETRICO - VOLUMETRIC EFFICIENCY**



**COPIA ASSORBITA / INPUT TORQUE**

