

SERIE XLS

3.1.2.9.

Pompa ad Ingranaggi Gear Pump

CODICE DI ORDINAZIONE / DECODING

3.1.2.9 . XXX . X . 5 . 00

ATTACCO IN TESTA
REAR PORT

ROTAZIONE/ROTATION
1 = SINISTRO/ANTICLOCKWISE
2 = DESTRO/CLOCKWISE

CILINDRATA/DISPLACEMENT

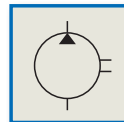
CODICE BASE/BASIC CODE

DIN
5 4 6 2
SE

XLS 43
XLS 57
XLS 65
XLS 90
XLS 110

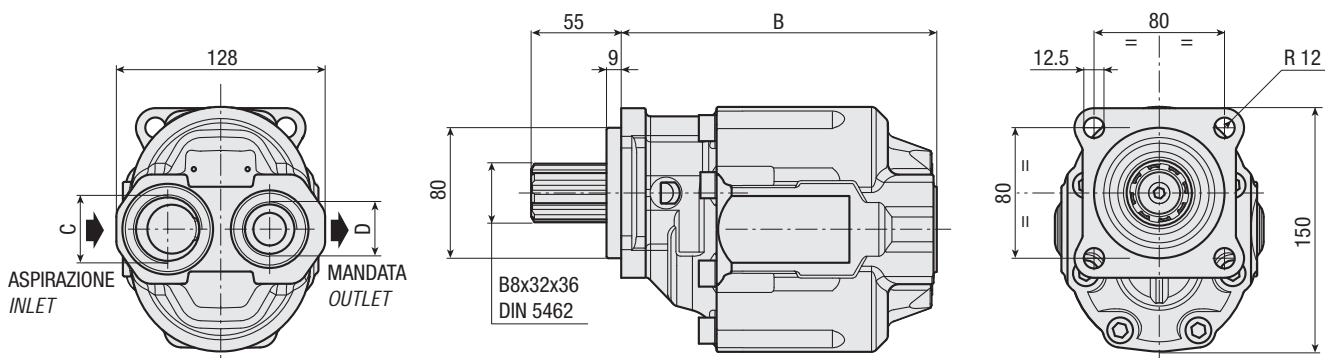


SCANIA



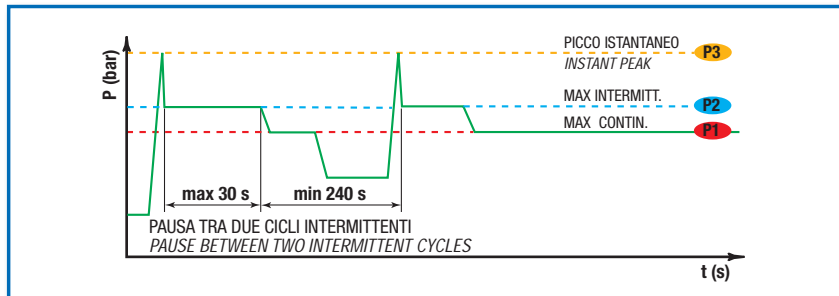
CARATTERISTICHE E DATI TECNICI / SPECIFICATIONS AND TECHNICAL DATA

TIPO TYPE	CODICE CODE	CILINDRATA DISPLACEMENT cm ³ /rev.	B mm	C ASPIRAZIONE INLET	D MANDATA OUTLET	PESO WEIGHT kg
XLS 43	3.1.2.9.043.X.5.00	43	132.5	1" G	3/4" G	10.2
XLS 57	3.1.2.9.057.X.5.00	57	173.5	1" G	3/4" G	12.2
XLS 65	3.1.2.9.065.X.5.00	65	178.5	1" G	3/4" G	12.6
XLS 90	3.1.2.9.090.X.5.00	84	193.5	1" 1/4 G	1" G	13.9
XLS 110	3.1.2.9.110.X.5.00	102	204.5	1" 1/4 G	1" G	14.3



DATI TECNICI / TECHNICAL DATA

ESEMPIO CICLI LAVORO / EXAMPLE OF WORKING CYCLES



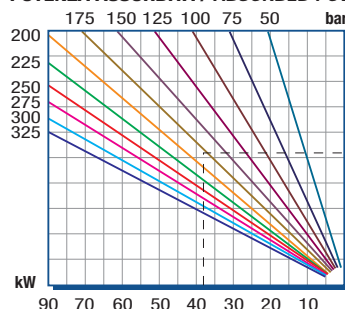
Pressione d'aspirazione: Inlet pressure:	0.7 ÷ 1.5 bar (assoluti/absolute)
Campo viscosità lavoro: Operating viscosity range:	12 ÷ 100 cSt
Temperatura fluido °C (t): Fluid temperature °C (t):	-10° + 80° C

Pressione Lavoro Working Press. P2	Contaminazione / Contamination		Filtro / Filter βx = 75
	NAS 1638	ISO 4406	
≤ 200 bar	12	21/18	40 μm
≥ 200 bar	11	20/17	25 μm

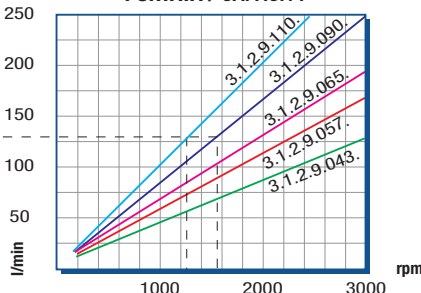
◀ **FILTRAZIONE CONSIGLIATA (ritorno o mandata)**
RECOMMENDED FILTERING (return or outlet)

TIPO / TYPE			XLS 43	XLS 57	XLS 65	XLS 90	XLS 110
Cilindrata Displacement	Vg	cm ³ /n cm ³ /rev.	43	57	65	84	105
Pressione massima continua Max continuous operating pressure	P1	bar	280	260	240	220	180
Pressione massima intermittente Max intermitt. operating pressure (max 30 s)	P2		305	285	265	240	200
Pressione massima di picco Max peak pressure (≤ 0.1 s)	P3		325	380	330	300	220
Velocità massima intermittente Max intermittent speed (P ≤ 20 bar)	n3	n/min r.p.m.	3500	3000	3000	3000	3000
Velocità massima continua Max continuous speed (≤ P1)	n1		2200	2500	2500	2500	1500
Velocità minima intermittente Min intermittent speed (≤ P2 x 0.5) (max 30 s)	n4		350	450	400	400	300

POTENZA ASSORBITA / ABSORBED POWER



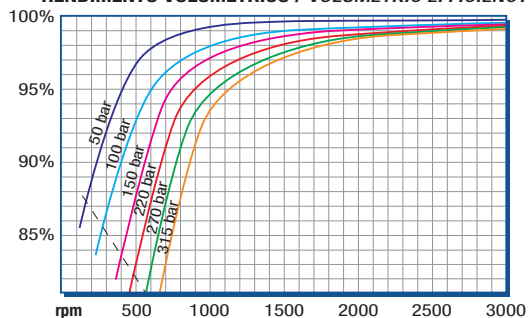
PORTATA / CAPACITY



RILIEVI ESEGUITI CON OLIO
ISO VG 46 A 50° C (ν=30 cSt)
THE ABOVE SPECIFICATIONS
REFER TO OIL TYPE ISO
VG 46 AT 50° C (ν=30 cSt)

DIAGRAMMI / DIAGRAMS

RENDIMENTO VOLUMETRICO / VOLUMETRIC EFFICIENCY



COPIA ASSORBITA / DRIVE TORQUE

