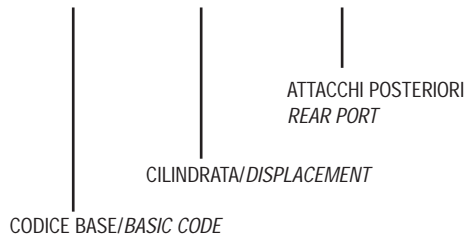


# SERIE XBR

CODICE DI ORDINAZIONE / DECODING

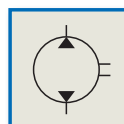
3.1.5.7 . XXX . 0 . 1 . 00



# 3.1.5.7.

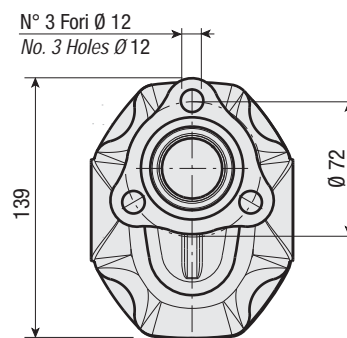
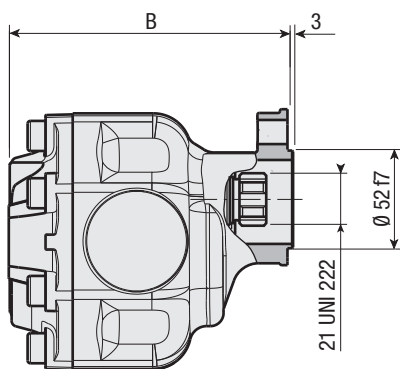
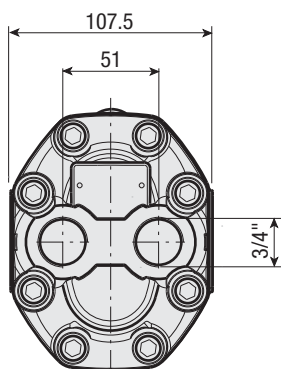
**UNI** XBR 36  
XBR 43  
21-222 XBR 64

Pompa ad Ingranaggi  
Gear Pump



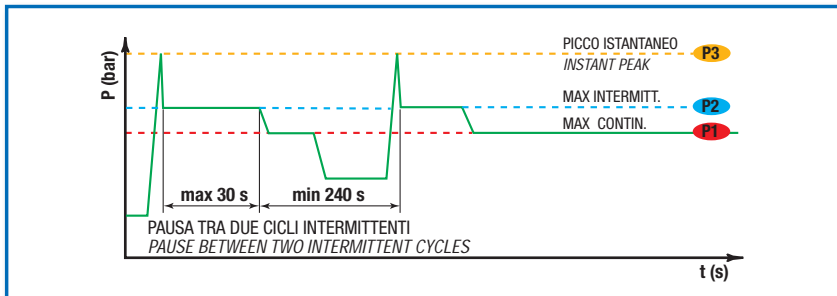
## CARATTERISTICHE E DATI TECNICI / SPECIFICATIONS AND TECHNICAL DATA

TIPO TYPE	CODICE CODE	CILINDRATA DISPLACEMENT cm <sup>3</sup> /rev.	B mm	ASPIRAZIONE INLET	MANDATA OUTLET	PESO WEIGHT kg
XBR 36	3.1.5.7.036.0.1.00	36	128	3/4" G	3/4" G	6.2
XBR 43	3.1.5.7.043.0.1.00	43	133	3/4" G	3/4" G	6.8
XBR 64	3.1.5.7.064.0.1.00	64	148	3/4" G	3/4" G	7.3



**DATI TECNICI / TECHNICAL DATA**

**ESEMPIO CICLI LAVORO / EXAMPLE OF WORKING CYCLES**



Pressione d'aspirazione: Inlet pressure:	0.7 ÷ 1.5 bar (assoluti/absolute)
Campo viscosità lavoro: Operating viscosity range:	12 ÷ 100 cSt
Temperatura fluido °C (t): Fluid temperature °C (t):	-10° + 80° C

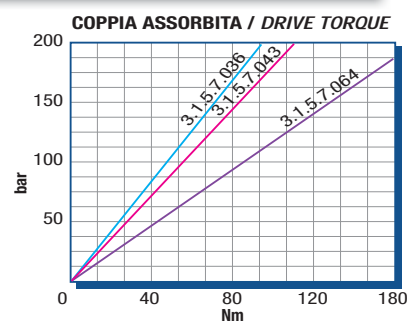
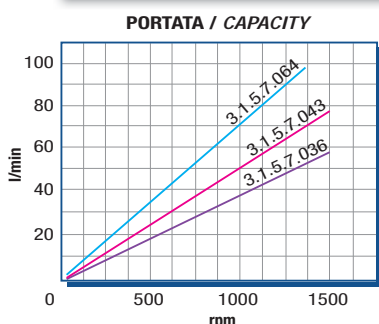
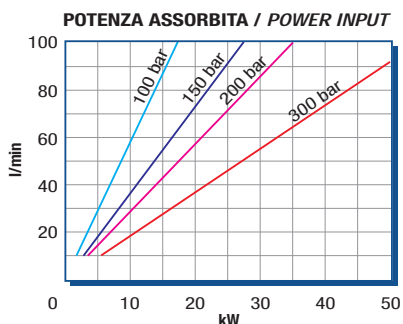
Pressione Lavoro Working Press. P2	Contaminazione / Contamination		Filtro / Filter βx = 75
	NAS 1638	ISO 4406	
≤ 200 bar	12	21/18	40 μm
≥ 200 bar	11	20/17	25 μm

◀ **FILTRAZIONE CONSIGLIATA (ritorno o mandata)**  
**RECOMMENDED FILTERING (return or outlet)**

TIPO / TYPE		XBR 36	XBR 43	XBR 64	
Cilindrata Displacement	Vg	cm <sup>3</sup> /n cm <sup>3</sup> /rev.	36	43	64
Pressione massima continua Max continuous operating pressure	P1	bar	200	190	170
Pressione massima intermittente Max intermitt. operat. press.	(max 30 s) P2	bar	220	210	190
Pressione massima di picco Max peak pressure	(≤ 0.1 s) P3	bar	250	250	240
Velocità massima intermittente Max intermittent speed	(P ≤ 20 bar) n3	r.p.m.	2000	2000	2000
Velocità massima continua Max continuous speed	(≤ P1) n1	r.p.m.	1500	1500	1400
Velocità minima intermittente Min intermittent speed	(≤ P2 x 0.5) (max 30 s) n4	r.p.m.	450	450	450

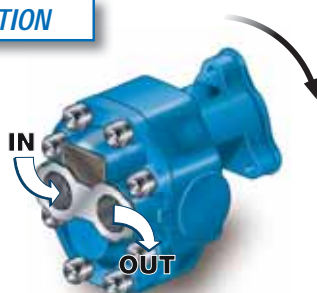
**DIAGRAMMI / DIAGRAMS**

RILIEVI ESEGUITI CON OLIO ISO VG 46 A 50° C (ν = 30 cSt)  
THE ABOVE SPECIFICATIONS REFER TO OIL TYPE ISO VG 46 AT 50° C (ν = 30 cSt)



**ROTAZIONE POMPA / PUMP ROTATION**

**SINISTRA  
ANTI-CLOCKWISE**



**DESTRA  
CLOCKWISE**

