

SERIE XBM

3.1.53.

CODICE DI ORDINAZIONE / DECODING

3.1.53 . XXX . 0 . 0 . 0 . 0

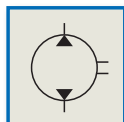
CILINDRATA/DISPLACEMENT

CODICE BASE/BASIC CODE

DIN
5 4 6 2
SE

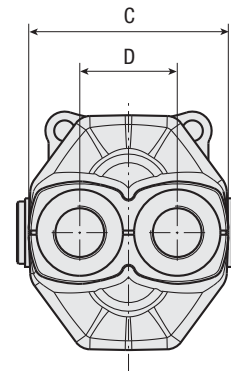
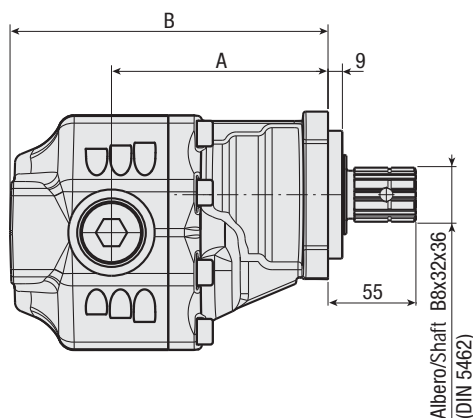
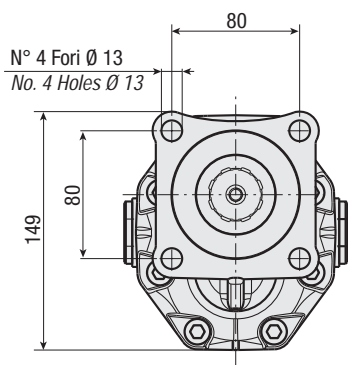
XBM 36
XBM 43
XBM 56
XBM 65
XBM 80
XBM 100

Pompa ad Ingranaggi
Gear Pump



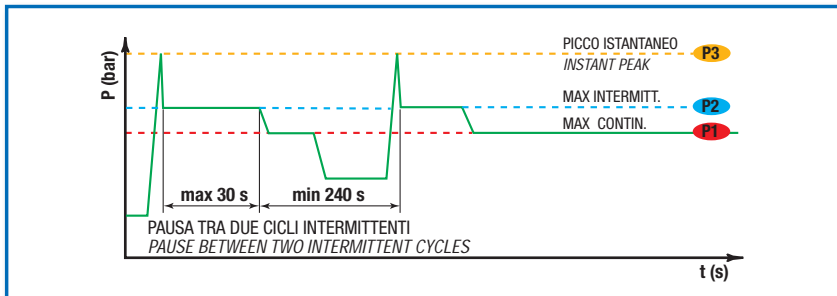
CARATTERISTICHE E DATI TECNICI / SPECIFICATIONS AND TECHNICAL DATA

TIPO TYPE	CODICE CODE	CILINDRATA DISPLACEMENT cm ³ /rev.	A mm	B mm	C mm	D mm	ASPIRAZIONE INLET	MANDATA OUTLET	PESO WEIGHT kg
XBM 36	3.1.53.036.0.0.0.0	36	129	185	125	61	3/4" G	3/4" G	13
XBM 43	3.1.53.043.0.0.0.0	43	131,5	191	125	61	3/4" G	3/4" G	13,4
XBM 56	3.1.53.056.0.0.0.0	56	135,5	198,5	125	61	1" G	1" G	14
XBM 65	3.1.53.065.0.0.0.0	65	141	204	125	61	1" G	1" G	14,8
XBM 80	3.1.53.080.0.0.0.0	84	141	216	140	70	1" 1/4 G	1" 1/4 G	15,6
XBM 100	3.1.53.100.0.0.0.0	100	147	222	140	70	1" 1/4 G	1" 1/4 G	16,2



DATI TECNICI / TECHNICAL DATA

ESEMPIO CICLI LAVORO / EXAMPLE OF WORKING CYCLES



Pressione d'aspirazione: Inlet pressure:	0.7 ÷ 1.5 bar (assoluti/absolute)
Campo viscosità lavoro: Operating viscosity range:	12 ÷ 100 cSt
Temperatura fluido °C (t): Fluid temperature °C (t):	-10° + 80° C

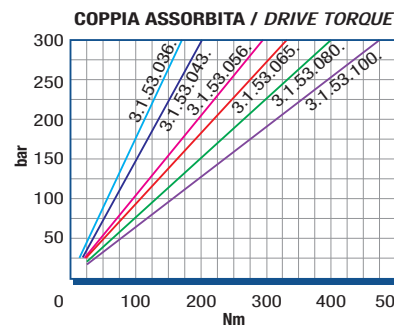
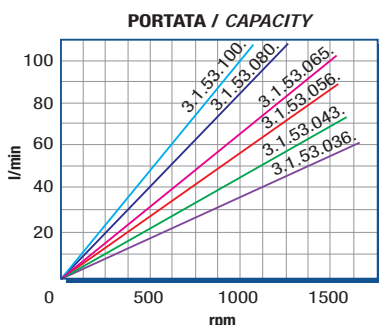
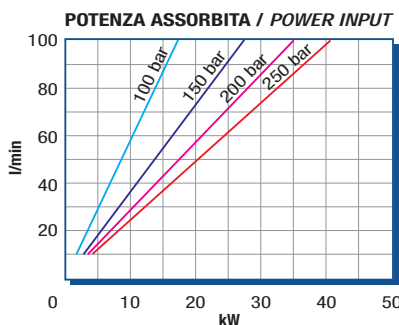
Pressione Lavoro Working Press. P2	Contaminazione / Contamination		Filtro / Filter βx = 75
	NAS 1638	ISO 4406	
≤ 200 bar	12	21/18	40 μm
≥ 200 bar	11	20/17	25 μm

◀ **FILTRAZIONE CONSIGLIATA (ritorno o mandata)**
RECOMMENDED FILTERING (return or outlet)

TIPO / TYPE		XBM36	XBM43	XBM56	XBM65	XBM80	XBM100
Cilindrata Displacement	Vg	36	43	56	65	84	100
Pressione massima continua Max continuous operating pressure	P1	230	230	220	200	180	160
Pressione massima intermittente Max intermitt. operat. press.	(max 30 s) P2	240	240	230	210	200	180
Pressione massima di picco Max peak pressure	(≤ 0.1 s) P3	250	250	240	220	210	190
Velocità massima intermittente Max intermittent speed	(P ≤ 20 bar) n3	2100	2100	1800	1800	1700	1700
Velocità massima continua Max continuous speed	(≤ P1) n1	1700	1700	1500	1500	1400	1400
Velocità minima intermittente Min intermittent speed	(≤ P2 x 0.5) (max 30 s) n4	400	400	300	300	300	300

DIAGRAMMI / DIAGRAMS

RILIEVI ESEGUITI CON OLIO ISO VG 46 A 50° C (ν = 30 cSt)
THE ABOVE SPECIFICATIONS REFER TO OIL TYPE ISO VG 46 AT 50° C (ν = 30 cSt)



ROTAZIONE POMPA / PUMP ROTATION

**SINISTRA
ANTI-CLOCKWISE**



**DESTRA
CLOCKWISE**

