

# SERIE XBG

CODICE DI ORDINAZIONE / DECODING

3.1.55 . XXX . 0 . P . 0 . 0

CILINDRATA/DISPLACEMENT

CODICE BASE/BASIC CODE

# 3.1.55.

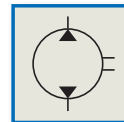
**DIN**  
5 4 6 2  
**SE**

XBG 90  
XBG 100  
XBG 110  
XBG 122

Pompa ad Ingranaggi  
Gear Pump

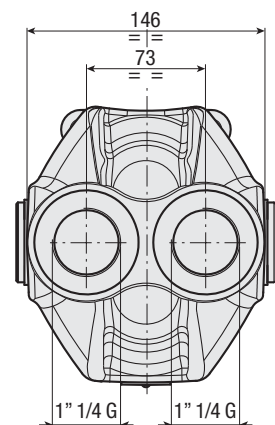
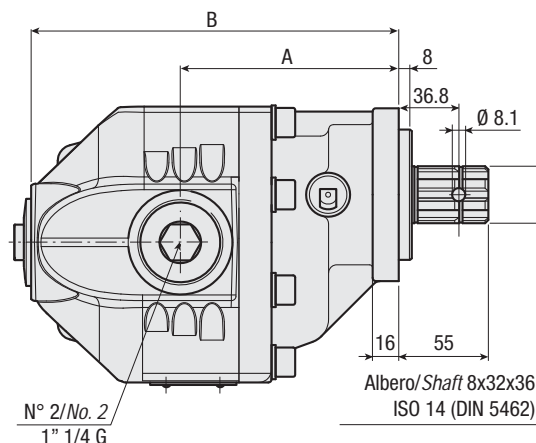
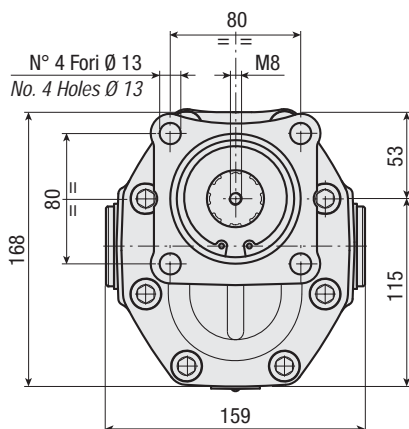


**New**



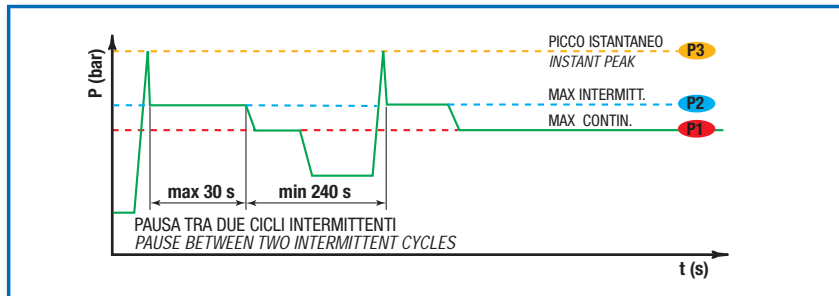
## CARATTERISTICHE E DATI TECNICI / SPECIFICATIONS AND TECHNICAL DATA

TIPO TYPE	CODICE CODE	CILINDRATA DISPLACEMENT cm <sup>3</sup> /rev.	A mm	B mm	C ASPIRAZIONE/MANDATA INLET/OUTLET	PESO WEIGHT kg
XBG 90	3.1.55.090.0.P.0.0	88.8	134	226	1" 1/4 G	20.5
XBG 100	3.1.55.100.0.P.0.0	98.5	138	230	1" 1/4 G	21.5
XBG 110	3.1.55.110.0.P.0.0	108.3	136	234	1" 1/4 G	22
XBG 122	3.1.55.122.0.P.0.0	119.2	141	239	1" 1/4 G	22.9



**DATI TECNICI / TECHNICAL DATA**

**ESEMPIO CICLI LAVORO / EXAMPLE OF WORKING CYCLES**



Pressione d'aspirazione: Inlet pressure:	0.7 ÷ 1.5 bar (assoluti/absolute)
Campo viscosità lavoro: Operating viscosity range:	12 ÷ 100 cSt
Temperatura fluido °C (t): Fluid temperature °C (t):	-10° + 80° C

Pressione Lavoro Working Press. P2	Contaminazione / Contamination		Filtro / Filter βx = 75
	NAS 1638	ISO 4406	
≤ 200 bar	12	21/18	40 μm
≥ 200 bar	11	20/17	25 μm

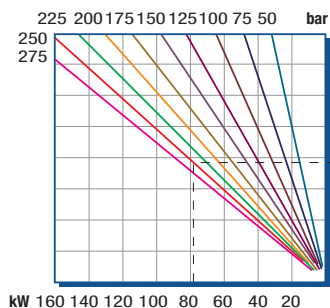
◀ **FILTRAZIONE CONSIGLIATA (ritorno o mandata)**  
**RECOMMENDED FILTERING (return or outlet)**

TIPO / TYPE			XBG 90	XBG 100	XBG 110	XBG 122
Cilindrata Displacement	Vg	cm <sup>3</sup> /n cm <sup>3</sup> /rev.	88.8	98.5	108.3	119.2
Pressione massima continua Max continuous operating pressure	P1	bar	250	225	210	210
Pressione massima intermittente Max intermitt. operat. press.	(max 30 s) P2		275	250	230	230
Pressione massima di picco Max peak pressure	(≤ 0.1 s) P3		290	265	245	245
Velocità massima intermittente Max intermittent speed	(P ≤ 20 bar) n3	n/min r.p.m.	2200	2200	2200	2000
Velocità massima continua Max continuous speed	(≤ P1) n1		1800	1800	1800	1500
Velocità minima intermittente Min intermittent speed	(≤ P2 x 0.5) (max 30 s) n4		300	300	300	300

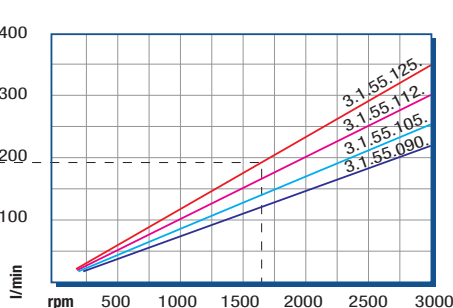
**DIAGRAMMI / DIAGRAMS**

RILIEVI ESEGUITI CON OLIO ISO VG 46 A 50° C (ν = 30 cSt)  
THE ABOVE SPECIFICATIONS REFER TO OIL TYPE ISO VG 46 AT 50° C (ν = 30 cSt)

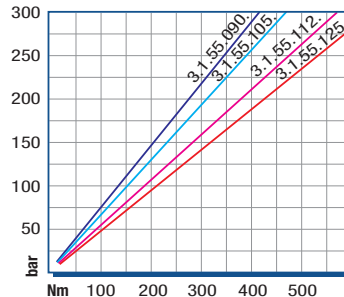
**POTENZA ASSORBITA / ABSORBED POWER**



**PORTATA / CAPACITY**



**COPPIA ASSORBITA / INPUT TORQUE**



**ROTAZIONE POMPA / PUMP ROTATION**

