

# SERIE P1-3F 3.1.6.1.

CODICE DI ORDINAZIONE / DECODING

3.1.6 . 1 . XXX . 1 . 0 . 00

**UNI**  
21-222

P1 19-3F  
P1 25-3F  
P1 37-3F  
P1 50-3F  
P1 60-3F

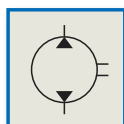
1 = UNI 3 FORI/3 HOLES UNI

CILINDRATA/DISPLACEMENT

1 = SERIE NORMALE/STANDARD SERIES

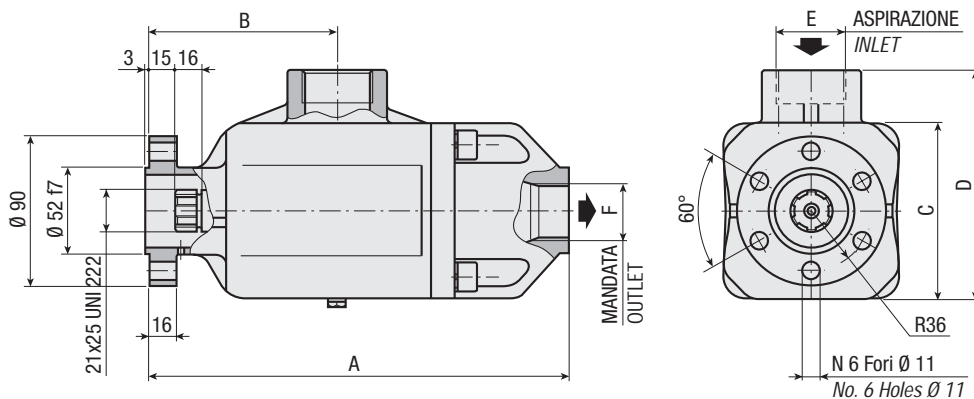
CODICE BASE/BASIC CODE

**Pompa a Pistoni**  
*Piston Pump*



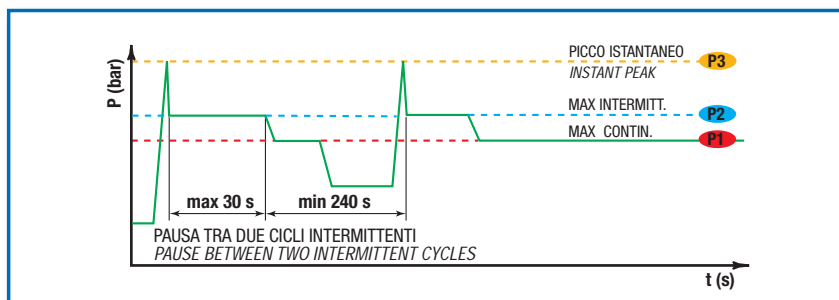
## CARATTERISTICHE E DATI TECNICI / SPECIFICATIONS AND TECHNICAL DATA

TIPO TYPE	CODICE CODE	CILINDRATA DISPLACEMENT cm <sup>3</sup> /rev.	A mm	B mm	C mm	D mm	E ASPIRAZIONE INLET	F MANDATA OUTLET	PESO WEIGHT kg
P1 19-3F	3.1.6.1.019.1.0.00	19	253	113	106	138	1" ¼ G	1" G	10.0
P1 25-3F	3.1.6.1.025.1.0.00	25							
P1 37-3F	3.1.6.1.037.1.0.00	37							
P1 50-3F	3.1.6.1.050.1.0.00	50							
P1 60-3F	3.1.6.1.060.1.0.00	60							



**DATI TECNICI / TECHNICAL DATA**

**ESEMPIO CICLI LAVORO / EXAMPLE OF WORKING CYCLES**



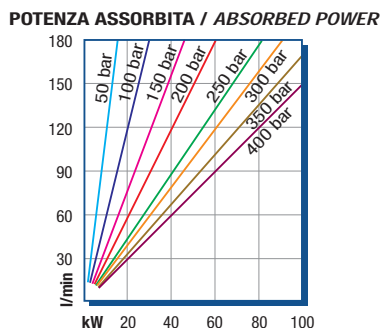
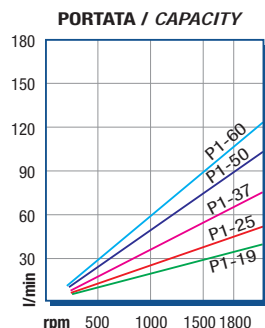
Pressione d'aspirazione: Inlet pressure:	0.7 ÷ 1.5 bar (assoluti/absolute)
Campo viscosità lavoro: Operating viscosity range:	12 ÷ 100 cSt
Temperatura fluido °C (t): Fluid temperature °C (t):	-10° + 80° C

Pressione Lavoro Working Press. P2	Contaminazione / Contamination		Filtro / Filter βx = 75
	NAS 1638	ISO 4406	
≤ 200 bar	12	21/18	40 μm
≥ 200 bar	11	20/17	25 μm

◀ FILTRAZIONE CONSIGLIATA (ritorno o mandata)  
RECOMMENDED FILTERING (return or outlet)

TIPO / TYPE			P1 19-3F	P1 25-3F	P1 37-3F	P1 50-3F	P1 60-3F
Cilindrata Displacement	Vg	cm <sup>3</sup> /n cm <sup>3</sup> /rev.	19	25	37	50	60
Pressione massima continua Max continuous operating pressure	P1	bar	350	350	350	350	300
Pressione massima intermittente Max intermitt. operating pressure	(max 30 s) P2		400	400	400	400	350
Pressione massima di picco Max peak pressure	(≤ 0.1 s) P3		450	450	450	450	400
Velocità massima intermittente Max intermittent speed	(P ≤ 20 bar) n3	n/min r.p.m.	2200	2200	2200	2200	2100
Velocità massima continua Max continuous speed	(≤ P1) n1		1800	1800	1800	1800	1700
Velocità minima intermittente Min intermittent speed	(≤ P2 x 0.5) (max 30 s) n4		400	400	400	400	400

**DIAGRAMMI / DIAGRAMS**



RILIEVI ESEGUITI CON OLIO  
ISO VG 46 A 50° C (ν=30 cSt)  
THE ABOVE SPECIFICATIONS  
REFER TO OIL TYPE ISO  
VG 46 AT 50° C (ν=30 cSt)

SERIE P1-3F 316.1.

POMPE A PISTONI / PISTON PUMPS

2