

SERIE ISO-EV 3.1.2.6.

CODICE DI ORDINAZIONE / DECODING

3.1.2.6 . XXX . X . XX . 0

DIN
5 4 6 2
SE

ISO-EV 73
ISO-EV 84
ISO-EV 100
ISO-EV 116

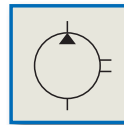
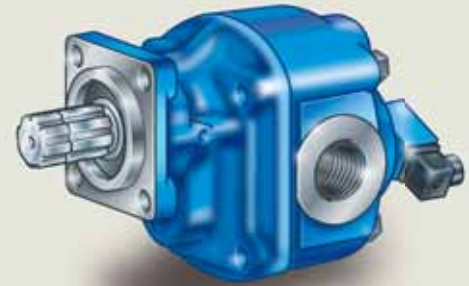
ALLESTIMENTI SPECIALI/SPECIAL OPTIONS
09 = CON ELETTROVALVOLA DI BY-PASS 24 V
WITH BY-PASS ELECTRIC VALVE 24 V
10 = CON ELETTROVALVOLA DI BY-PASS 12 V
WITH BY-PASS ELECTRIC VALVE 12 V

ROTAZIONE/ROTATION
1 = SINISTRO/ANTICLOCKWISE
2 = DESTRO/CLOCKWISE

CILINDRATA/DISPLACEMENT

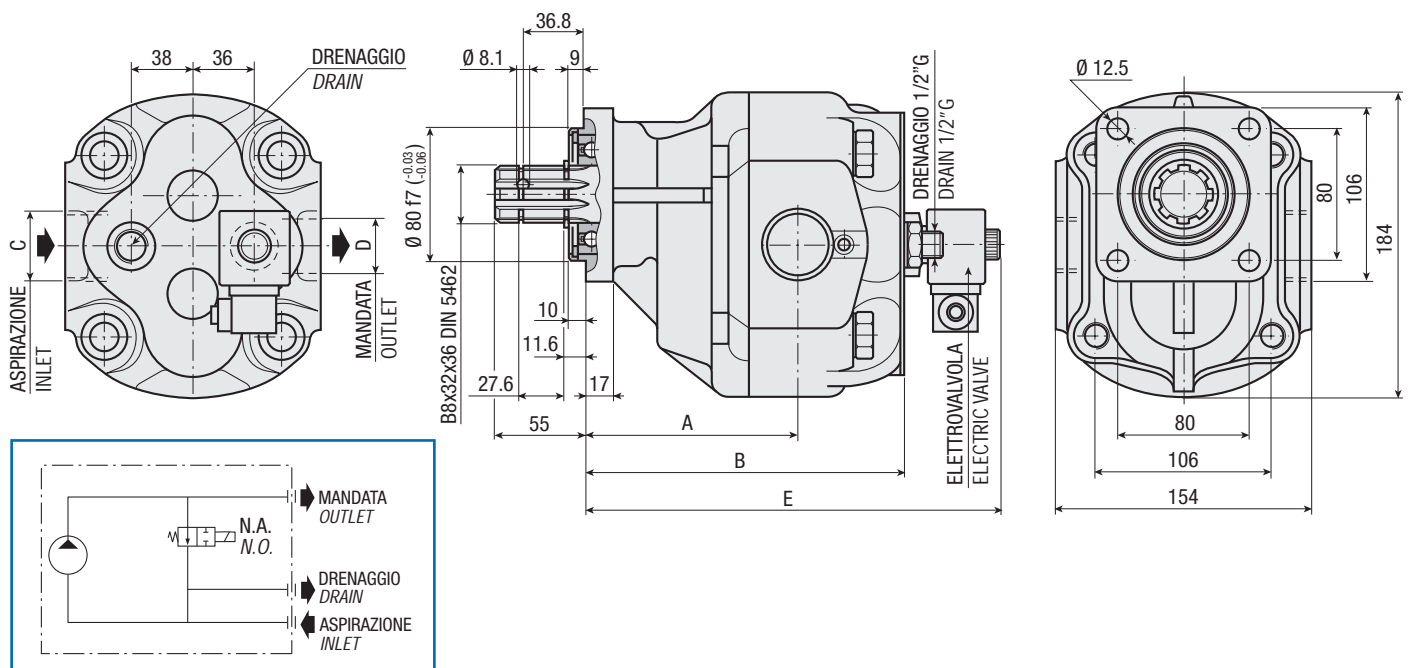
CODICE BASE/BASIC CODE

Pompa ad Ingranaggi
con Elettrovalvola di By-pass
*Gear Pump
with By-pass Electric Valve*



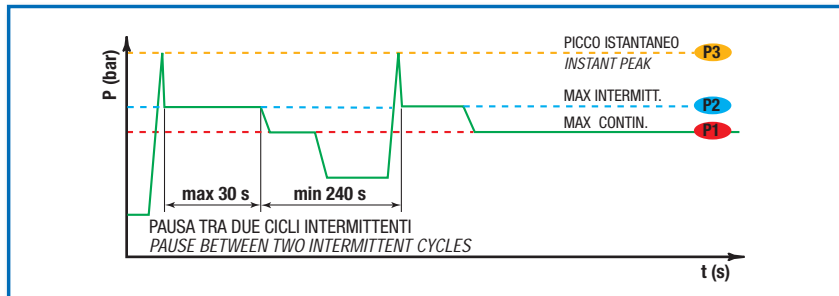
CARATTERISTICHE E DATI TECNICI / SPECIFICATIONS AND TECHNICAL DATA

| TIPO TYPE | CODICE CODE | CILINDRATA DISPLACEMENT cm ³ /rev. | A mm | B mm | C ASPIRAZIONE INLET | D MANDATA OUTLET | E mm | PESO WEIGHT kg |
|--------------|--------------------|---|---------|---------|---------------------------|------------------------|---------|----------------------|
| ISO-EV 73 | 3.1.2.6.073.X.XX.0 | 73 | 126 | 190 | 1" G | 3/4" G | 250 | 21.6 |
| ISO-EV 84 | 3.1.2.6.084.X.XX.0 | 84 | 130 | 194 | 1" 1/4 G | 1" G | 254 | 22.3 |
| ISO-EV 100 | 3.1.2.6.100.X.XX.0 | 100 | 130 | 200 | 1" 1/4 G | 1" G | 260 | 23.3 |
| ISO-EV 116 | 3.1.2.6.116.X.XX.0 | 116 | 206 | 206 | 1" 1/4 G | 1" G | 266 | 24.3 |



DATI TECNICI / TECHNICAL DATA

ESEMPIO CICLI LAVORO / EXAMPLE OF WORKING CYCLES



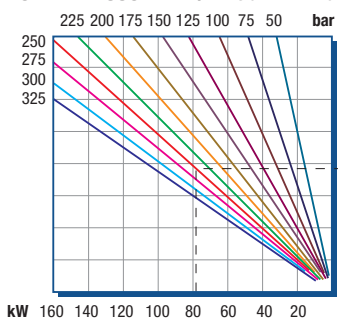
| | |
|---|--------------------------------------|
| Pressione d'aspirazione: Inlet pressure: | 0.7 ÷ 1.5 bar (assoluti/absolute) |
| Campo viscosità lavoro: Operating viscosity range: | 12 ÷ 100 cSt |
| Temperatura fluido °C (t): Fluid temperature °C (t): | -10° + 80° C |

| Pressione Lavoro Working Press. P2 | Contaminazione / Contamination | | Filtro / Filter βx = 75 |
|---------------------------------------|--------------------------------|----------|----------------------------|
| | NAS 1638 | ISO 4406 | |
| ≤ 200 bar | 12 | 21/18 | 40 μm |
| ≥ 200 bar | 11 | 20/17 | 25 μm |

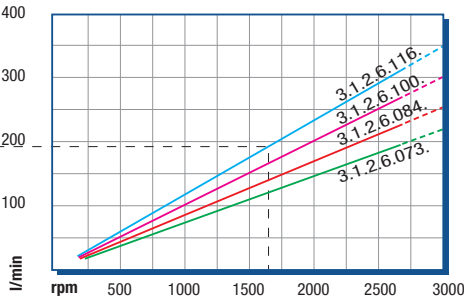
◀ **FILTRAZIONE CONSIGLIATA (ritorno o mandata)**
RECOMMENDED FILTERING (return or outlet)

| TIPO / TYPE | | | ISO-EV 73 | ISO-EV 84 | ISO-EV 100 | ISO-EV 116 |
|---|----|---|-----------|-----------|------------|------------|
| Cilindrata Displacement | Vg | cm ³ /n cm ³ /rev. | 73 | 84 | 100 | 116 |
| Pressione massima continua Max continuous operating pressure | P1 | bar | 290 | 270 | 260 | 250 |
| Pressione massima intermittente Max intermitt. operating pressure (max 30 s) | P2 | | 320 | 310 | 290 | 280 |
| Pressione massima di picco Max peak pressure (≤ 0.1 s) | P3 | | 450 | 450 | 375 | 340 |
| Velocità massima intermittente Max intermittent speed (P ≤ 20 bar) | n3 | n/min r.p.m. | 3800 | 3500 | 3500 | 3000 |
| Velocità massima continua Max continuous speed (≤ P1) | n1 | | 1800 | 1800 | 1500 | 1500 |
| Velocità minima intermittente Min intermittent speed (≤ P2 x 0.5) (max 30 s) | n4 | | 300 | 300 | 250 | 250 |

POTENZA ASSORBITA / ABSORBED POWER



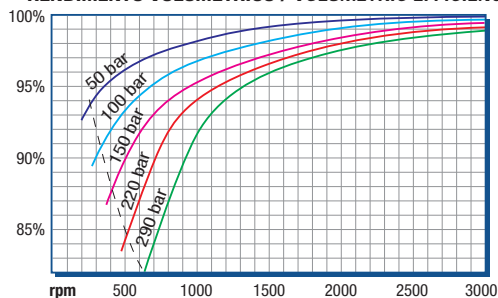
PORTATA / CAPACITY



RILIEVI ESEGUITI CON OLIO
ISO VG 46 A 50° C (ν=30 cSt)
THE ABOVE SPECIFICATIONS
REFER TO OIL TYPE ISO
VG 46 AT 50° C (ν=30 cSt)

DIAGRAMMI / DIAGRAMS

RENDIMENTO VOLUMETRICO / VOLUMETRIC EFFICIENCY



COPPIA ASSORBITA / INPUT TORQUE

