

SERIE **69N**

CODICE DI ORDINAZIONE / DECODING

3.1.1.7 . XXX . 0 . 0 . 00

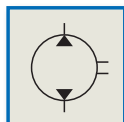
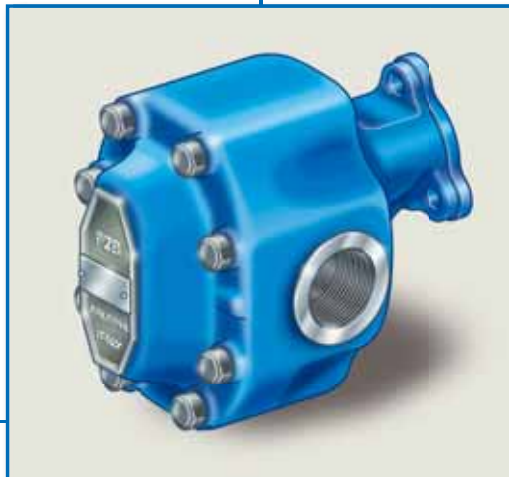
CILINDRATA/DISPLACEMENT

CODICE BASE/BASIC CODE

3.1.1.7.

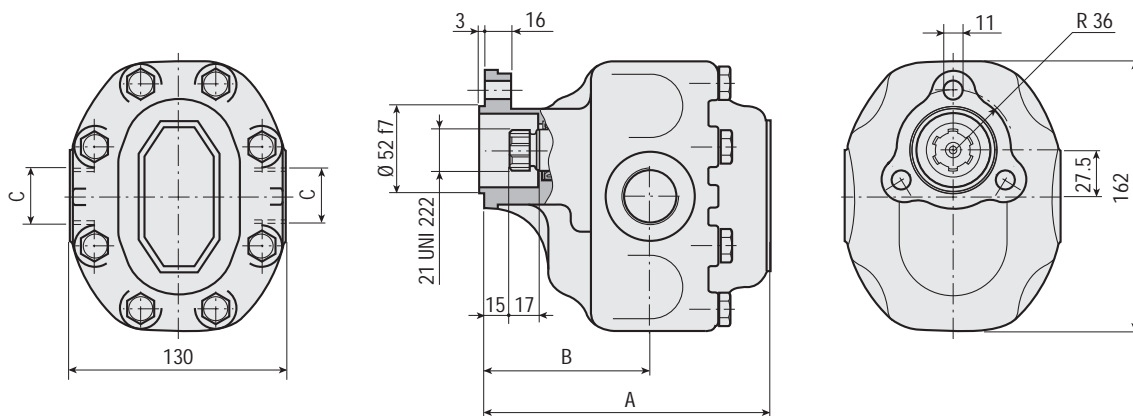
UNI 69 42N
69 50N
21-222 69 60N

Pompa ad Ingranaggi
Gear Pump



CARATTERISTICHE E DATI TECNICI / SPECIFICATIONS AND TECHNICAL DATA

TIPO TYPE	CODICE CODE	CILINDRATA DISPLACEMENT cm ³ /rev.	A mm	B mm	C	PESO WEIGHT kg
69 42N	3.1.1.7.105.0.0.00	105	170.5	98.7	1" G	11.7
69 50N	3.1.1.7.125.0.0.00	125	178.5	98.7	1" ¼ G	12.3
69 60N	3.1.1.7.150.0.0.00	150	188.5	98.7	1" ¼ G	13.3



DATI TECNICI / TECHNICAL DATA

Pressione d'aspirazione: <i>Inlet pressure:</i>	0.6 ÷ 1 bar (assoluti/absolute)
Campo viscosità lavoro: <i>Operating viscosity range:</i>	36 ÷ 100 cSt
Temperatura fluido °C (t): <i>Fluid temperature °C (t):</i>	-10° + 80° C

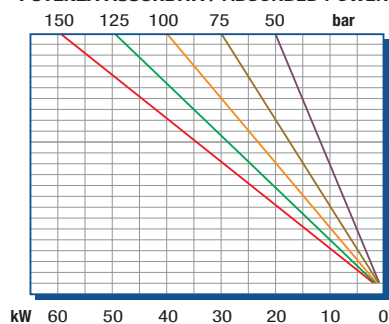
Pressione Lavoro <i>Working Press. P1</i>	Contaminazione / <i>Contamination</i>		Filtro / <i>Filter</i> βx = 75
	NAS 1638	ISO 4406	
≤ 140 bar	12	21/18	40 μm

◀ **FILTRAZIONE CONSIGLIATA (ritorno o mandata)**
RECOMMENDED FILTERING (return or outlet)

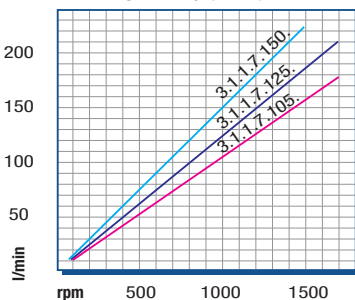
TIPO / <i>TYPE</i>			69 42N	69 50N	69 60N
Cilindrata <i>Displacement</i>	Vg	cm ³ /n cm ³ /rev.	105	125	150
Pressione massima continua <i>Max continuous operating pressure</i>	P1	bar	140	135	125
Pressione massima intermittente <i>Max intermitt. operating pressure</i>	(max 1 s) P2		190	185	175
Velocità massima intermittente <i>Max intermittent speed</i>	(P ≤ 20 bar)	n3	1900	1900	1700
Velocità massima continua <i>Max continuous speed</i>	(≤ P1)	n1	1700	1700	1500
Velocità minima intermittente <i>Min intermittent speed</i>	(≤ P2 x 0.5) (max 30 s)	n4	500	500	500

DIAGRAMMI / DIAGRAMS

POTENZA ASSORBITA / ABSORBED POWER



PORTATA / CAPACITY



COPPIA ASSORBITA / INPUT TORQUE

