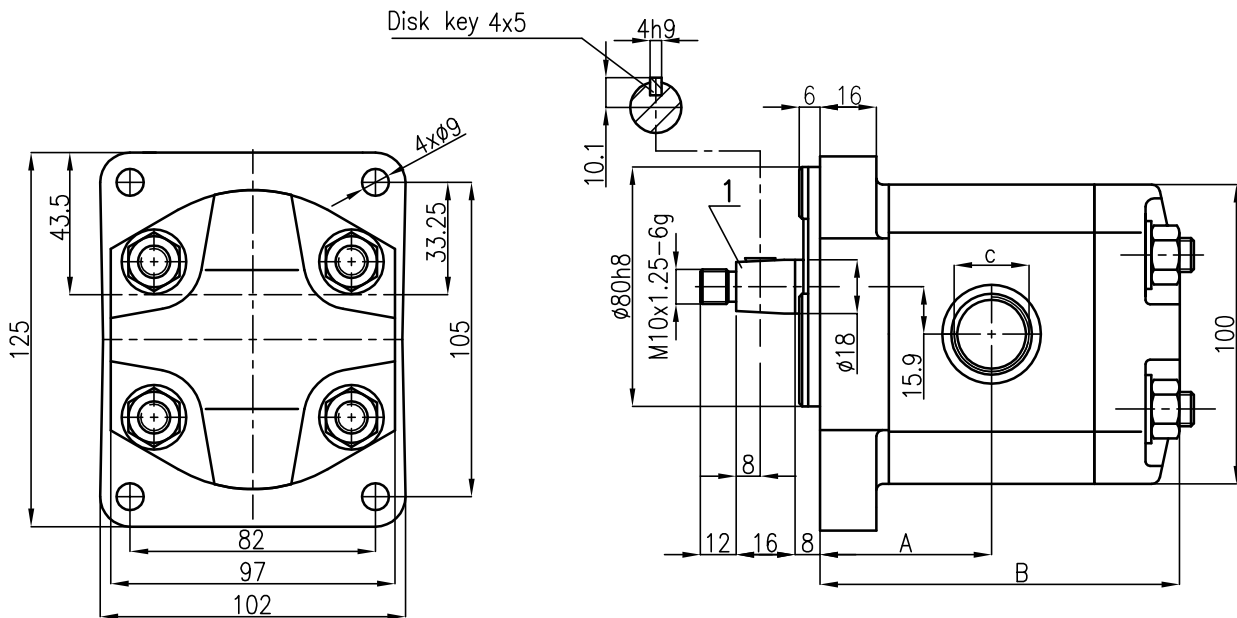
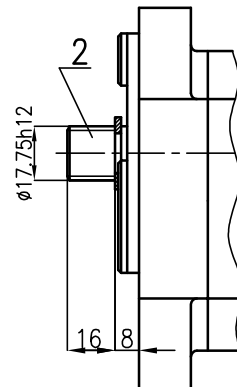




PZ3-II-2 technical drawing



- 1 - 1:10 shaft taper
- 2 - shaft splined 18x1,25x10b acc.to PN-69/M-85010



Geometric displacement ccm/rot	Pump designation	Dimension [mm]		Port thread inlet and outlet c
		A	B	
4	PZ3-4/20-x-122 PZ3-4/20-x-222	56	110.1	M20x1.5A
6.3	PZ3-6.3/20-x-122 PZ3-6.3/20-x-222	57	114.1	M22x1.5A
10	PZ3-10/20-x-122 PZ3-10/20-x-222	59.3	120.6	M22x1.5A
12.5	PZ3-12.5/16-x-122 PZ3-12.5/16-x-222	61.5	125	M22x1.5A
16	PZ3-16/16-x-122 PZ3-16/16-x-222	64.6	131.2	M27x2A
20	PZ3-20/12.5-x-122 PZ3-20/12.5-x-222	68	138.2	M27x2A

x-direction of rotation (1-counter clockwise; 2-clockwise)