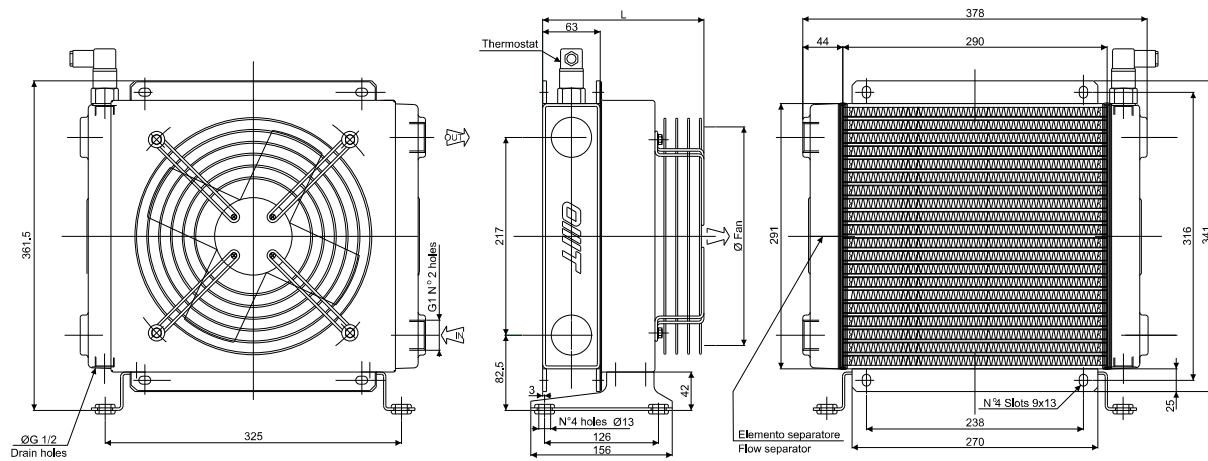


**SCAMBIATORE TIPO ARIA-OLIO**  
**HEAT EXCHANGER AIR-OIL VERSION**

**CARATTERISTICHE TECNICHE DEL GRUPPO DI VENTILAZIONE**  
**TECHNICAL FEATURES**

Tipologia Type	Frequenza Frequency Hz	Tensione Voltage V	N° Giri/min RPM	Potenza Power kW	Diam. Ventola Ø FAN (mm)	dB (A)	L (mm)	Q air (m³/h)	Cap. (lt)	Peso Weight (kg)	IP
01	50	220	2400	0.080/0.090	250	60	178	1310	0.9	11	54
03	50	380	2400	0.055/0.030	250	60	178	1440	0.9	11	54
14	50	230/400	1350	0.25	250	67	364	1500	0.9	15,5	55
	60	276/480	1620	0.30							
12	DC	12	3005	0.106	280	74	175	1404	0.9	10	68
24	DC	24	3005	0.106	280	74	175	1477	0.9	10	68
G2	-	-	-	-	250	-	217,5	-	0.9	10	-

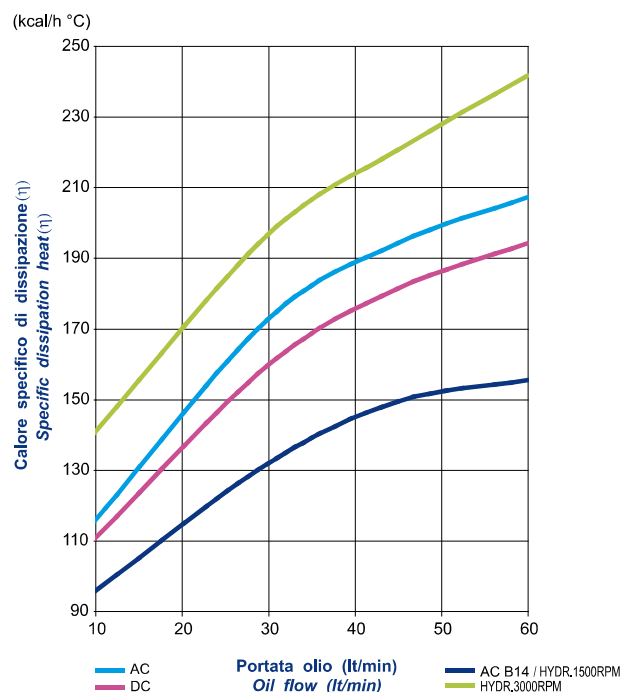
Portata olio consigliata da 10 a 60 (lt/min)  
Suggested oil flow from 10 to 60 (lt/min)



**Coefficiente di correzione**  
**Correction factor**

CST	10	15	20	32	40	50	60	80	100	200
F	0.51	0.66	0.76	1	1.22	1.4	1.6	1.9	2.1	3.4

**Diagramma di rendimento**  
**Performance diagram**



**Diagramma perdite di carico (32 cst)**  
**Pressure drop diagram (32 cst)**

