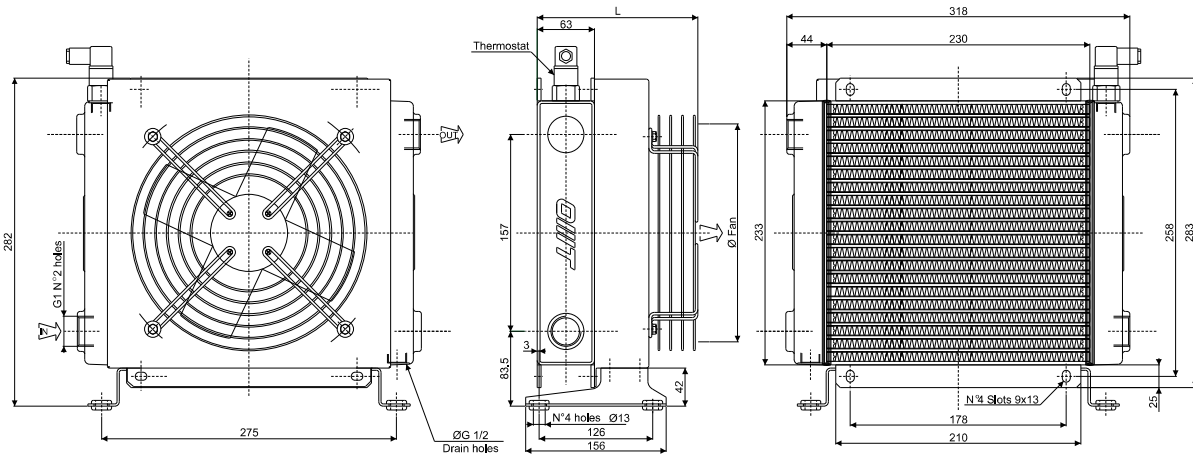


SCAMBIATORE TIPO ARIA-OLIO
HEAT EXCHANGER AIR-OIL VERSION

CARATTERISTICHE TECNICHE DEL GRUPPO DI VENTILAZIONE
TECHNICAL FEATURES

| Tipologia Type | Frequenza Frequency Hz | Tensione Voltage V | N° Giri/min RPM | Potenza Power kW | Diam. Ventola Ø FAN (mm) | dB (A) | L (mm) | Q air (m³/h) | Cap. (lt) | Peso Weight (kg) | IP |
|----------------|------------------------|--------------------|-----------------|------------------|--------------------------|--------|--------|--------------|-----------|------------------|----|
| 01 | 50 | 220 | 2500 | 0.055/0.060 | 200 | 52 | 188,5 | 715 | 0.68 | 8 | 54 |
| 03 | 50 | 380 | 2300 | 0.035/0.030 | 200 | 52 | 188,5 | 660 | 0.68 | 8 | 54 |
| 14 | 50 | 230/400 | 1350 | 0.25 | 200 | 67 | 365 | 700 | 0.68 | 11 | 55 |
| | 60 | 276/480 | 1620 | 0.30 | | | | | | | |
| 12 | DC | 12 | 3305 | 0.087 | 225 | 75 | 175 | 999 | 0.68 | 7 | 68 |
| 24 | DC | 24 | 3305 | 0.087 | 225 | 75 | 175 | 994 | 0.68 | 7 | 68 |
| G2 | - | - | - | - | 200 | - | 218,5 | - | 0,68 | 7 | - |

Portata olio consigliata da 30 a 100 (lt/min)
Suggested oil flow from 30 to 100 (lt/min)



Coefficiente di correzione
Correction factor

| CST | 10 | 15 | 20 | 32 | 40 | 50 | 60 | 80 | 100 | 200 |
|-----|------|------|------|----|------|-----|-----|-----|-----|-----|
| F | 0.51 | 0.66 | 0.76 | 1 | 1.22 | 1.4 | 1.6 | 1.9 | 2.1 | 3.4 |

Diagramma di rendimento
Performance diagram

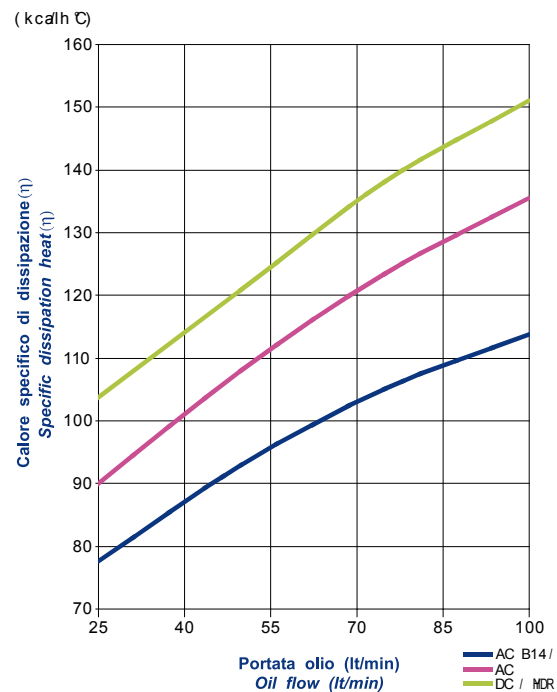


Diagramma perdite di carico (32 cst)
Pressure drop diagram (32 cst)

