

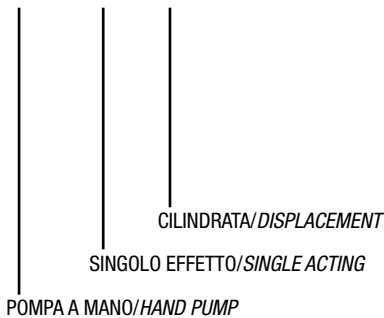
FISSAGGIO AL SERBATOIO
FIXING ONTO TANK

PAM

Pompe a Mano
Hand Pumps

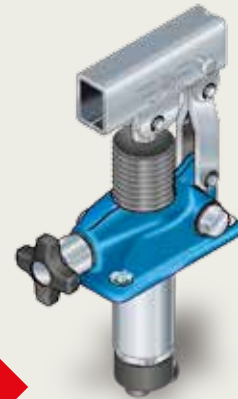
CODICE DI ORDINAZIONE / DECODING

PAM 014 XX 0 2 0



SINGOLO EFFETTO
SINGLE ACTING

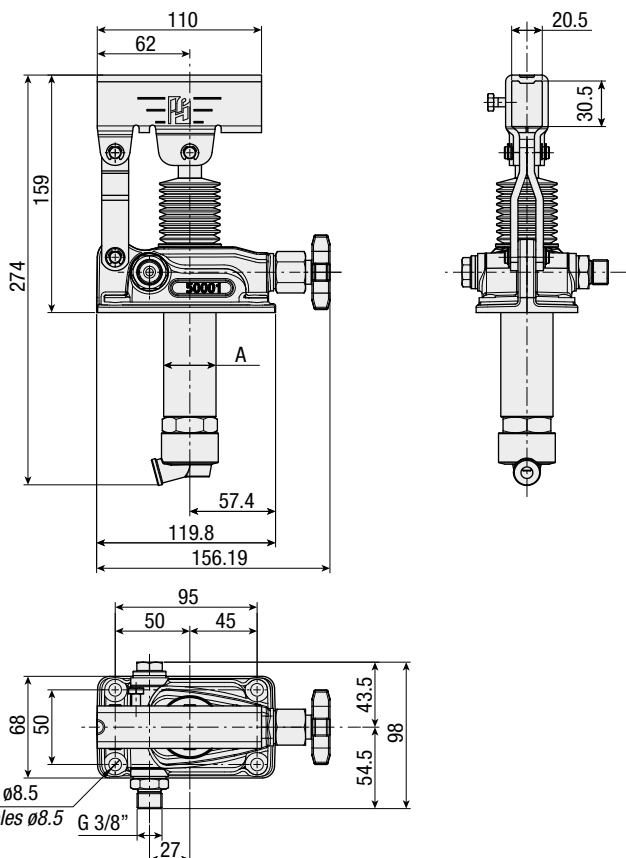
PAM-T12
PAM-T25
PAM-T45



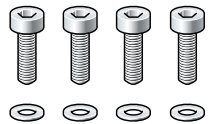

New

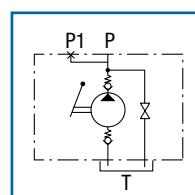
CARATTERISTICHE E DATI TECNICI / SPECIFICATIONS AND TECHNICAL DATA

TIPO TYPE	CODICE CODE	CILINDRATA DISPLACEMENT cm ³ /ciclo cm ³ /cycle	PRESSIONE MAX MAX PRESSURE	A mm	PESO WEIGHT kg
PAM-T12	PAM01412020	12	380	Ø 30	2.85
PAM-T25	PAM01425020	25	350	Ø 35	2.96
PAM-T45	PAM01445020	45	280	Ø 40	3.10



KIT RICAMBI PAM-T / PAM-T SPARE PARTS KIT

CODICE CODE	DESCRIZIONE DESCRIPTION
PAMJ0300170	<p>Viti di fissaggio Fastening screws</p>  <p>Serrare a coppia Max 25 Nm ± 2 Tightening torque Max 25 Nm ± 2</p>
	<p>Guarnizione Gasket</p> 



Le pompe a mano PAM-T vengono fornite complete di viti di fissaggio e guarnizione.

Hand Pumps of PAM-T Series are supplied with fastening screws and seal.

LEVA E SERBATOIO OLIO FORNITI A RICHIESTA
LEVER AND OIL TANK SUPPLIED ON REQUEST