

# HPM110

## Digital Pressure Gauge

The HPM110 digital pressure gauge is designed for continuous monitoring of oil, gas, water, hydraulic and other pressure media in mobile equipment, industrial hydraulics, compressors and process control equipment.

The HPM110 offers an economical solution to monitoring pressure and peak pressure with a simple visual display. The hand-held unit can be installed when required using a standard test point, or left permanently connected in a system. Since the HPM110 is battery powered it requires no external wiring.

The HPM110 simultaneously displays actual pressure, peak pressure, battery level and the engineering units selected. The back light can be switched on at the press of a button. Using the buttons on the front panel the user can clear the peak value, display min, max and actual pressure, reset the zero point and change the engineering units. The unit is available in four models, please see reverse for details.



Hydraulic measurement and control



Milwaukee, WI 53235, USA

Tel: +1 (414) 769-6400

sales-us@webtec.com

St. Ives, Cambs. PE27 3LZ, UK

Tel: +44 (0) 1480 397 400

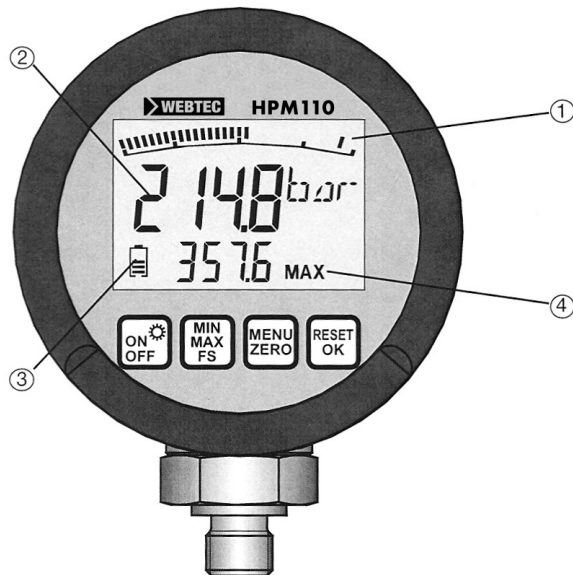
sales-uk@webtec.com

[www.webtec.com](http://www.webtec.com)

### Features

- **ACCURATE**  
( $\pm 0.5\%$  Full Scale)
- **ECONOMICALLY** priced
- **RUGGED** design
- **DIGITAL** display with bar graph
- **STAINLESS** Steel wetted parts
- **PEAK PRESSURE**  
10 ms scan rate
- **BACK** lit display





- ① Display with bar-graph due to peak & hold function
- ② Actual value back-lit display (15 mm)
- ③ Battery level display
- ④ Display of MIN/MAX or Full Scale Range display (FS)

## Specifications

Model number	Max pressure	Overload pressure	Burst pressure	Thread
SR-HPM-110-MT-100	100 bar	200 bar	800 bar	1/4" BSPP*
SR-HPM-110-MT-600	600 bar	1200 bar	2200 bar	1/4" BSPP*
SR-HPM-110-UN-1500	1500 psi	3000 psi	6000 psi	7/16" -20UN #4 SAE ORB Male
SR-HPM-110-UN-8700	8700 psi	17400 psi	31900 psi	7/16" -20UN #4 SAE ORB Male

\*M16 x 2 female adaptor fitted

### Functional specification

**Operating temperature:** -10 to 50°C (14 to 144°F)  
**Fluid type:** Oil, gas, water  
**Fluid temperature:** -20 to 80°C (4 to 17°F)  
**Accuracy:** ± 0.5% FS (typ.)  
**Scanning rate:** 10 mS  
**Humidity:** <85% RH  
**Protection:** EN60529 (IP67)

### Electrical specification

**Power supply:** 2 x 1.5 V alkaline batteries  
**Battery life:** 1,500 hours typically  
**Display:** LCD text display 4-1/2 digits 50mm x 34mm (2" x 1.3")

### Construction material

**Housing:** Zinc die cast with rubber TPE protection cover  
**Pressure port:** stainless steel

### Operation

A 'plug and play' product with a large clear back lit illuminated display. Separate bar graph with peak and hold function. Unit has 4 keys with embossed edges. Units can be set to psi, bar, MPa, mbar. Other functions include Min / Max display with reset, battery level display, auto power off and zero point equalization.

### Installation

Unit can be installed in any orientation and left in service if required. All connections should be made by suitably qualified personnel. Main diameter is 80mm (3.1"), thickness is 33mm (1.3"). No electrical connections needed.

### Calibration

Unit is factory calibrated - certificate available on request (chargeable option)



APPROVED