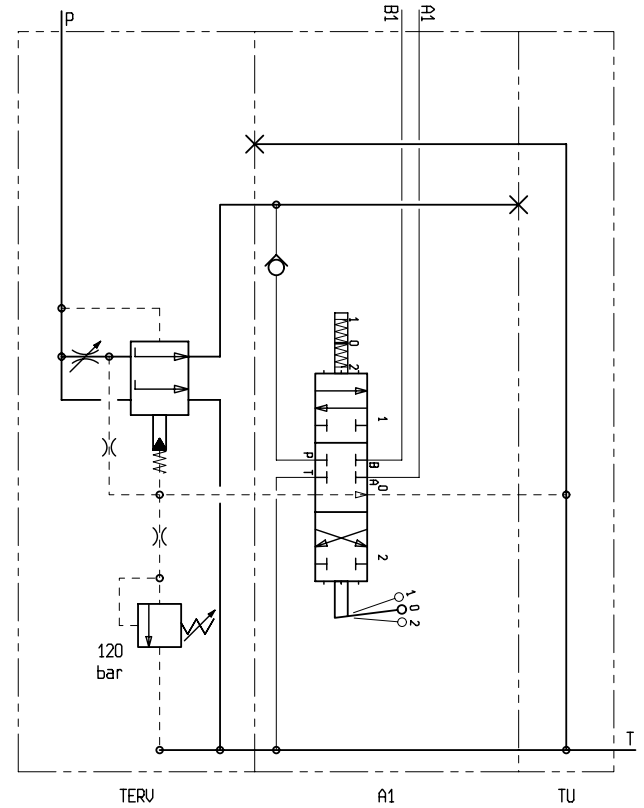
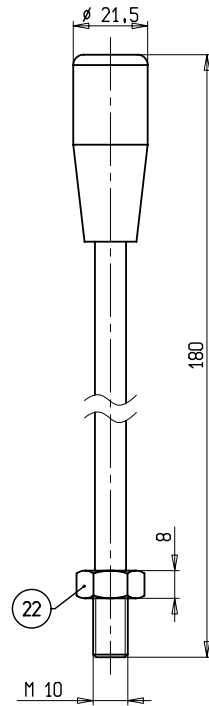
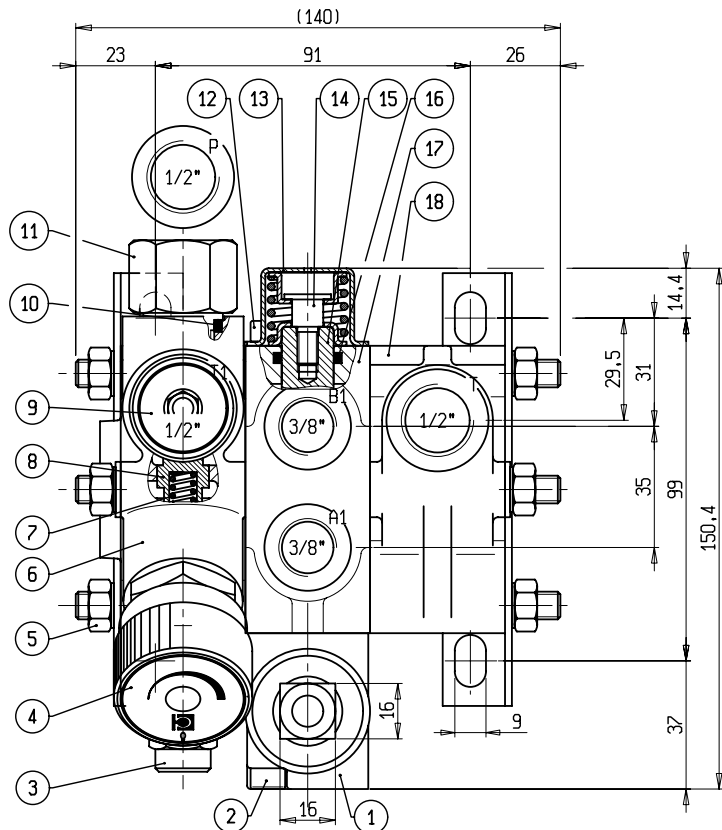
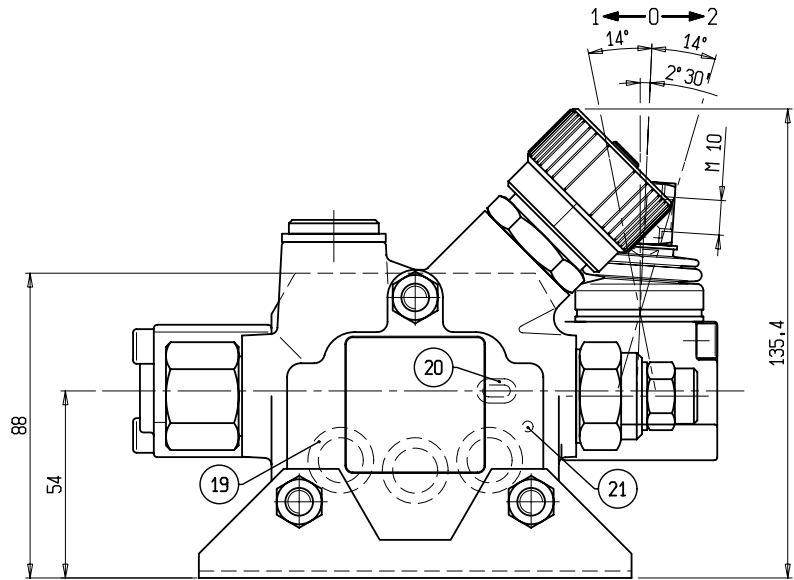


NON INTERPRETATE IL DISEGNO ; SE AVETE DUBBI CHIEDETE / DO NOT SCALE THIS PRINT - PLEASE INQUIRE IF THERE ARE QUESTIONS



22	535118002	KIT LEVA M10x180mm	1
21	380203006	SPINA CILINDRICA RETTIF. 3X6 UNI 6364-A	2
20	350A06002NBR90	OR Ø10 POLIPAC DF1.78 DI 6.07 90	2
19	350B13094NBR90	OR 113 POLIPAC DF2.62 DI13.94 90	6
18	4UC35B	CORPO T.U. LAV. DNC35 DA 1/2	1
17	4UE35AA	CORPO EL.DNC35 LAVORATO DA 3-8	1
16	350B15008NBR60	OR 616 DF2.62 DI15.08 60 SHOR	2
15	29213503000	SPOLA C.3 PER DNC35	S
14	580550A20	KIT POS. A PER ML DNC35 CORTO	S
13	277410201	PORTAPOSIZIONATORE IN LAMIERA PD	S
12	3901006008	VITI TCCE 6X8 UNI 5931 8.8 ZNC	2
11	2823012180000	RACCORDO PER TERU DNC35	S
10	350B17086NBR70	OR 617 DF2.62 DI17.86 70 SHOR	1
9	587201201	KIT TAPPO COLL.1/2G CON GUARN.MET./GOMMA	1
8	23601039	CURSORE PER TERU E DOPPIA VELOCI	S
7	26320086	MOLLA PER T.E. TERU E DOPPIA VEL	S
6	4UB35B	CORPO T.E. TERU DNC35 LAV. 1/2	1
5	590140009	KIT 3 TIRANTI L.140mm DADI E SHORT M8	1
4	WSROOM20014	CART. TERU PER DNC35	S
3	WPP00M24120	CARTUCCIA VPP DNC35 TAR 120 BAR	1
2	390100604501	VITE TCCE 6X45 UNI 5931 8.8 ZNC	2
1	57010817	KIT PORTALEVA DINOIL P.36 F.C.	1

Pos.	Codice	Descrizione	Q.ta
0	Emissione		9/3/2010
Rev.	Descrizione Modifica / Modify description	Operat./Designer	Data / Date

Descrizione / Description
DNC35/1 AY(120) TERU A1L PT

CODICI DI RICAMBIO SPARE PARTS	
T.U.	D06DC35B001R
EL.	D06DC35A0001R
TERU	D06DB35B120001R

	Contaminazione Ammissibile	20/18/13 ISO	Foglio / Sheet
	Operating Contamination	FDS1 4406.2 1999 1/1	
Scala / Scale	Derivato da / Derive from	Codice / Code	Rev.
1:1.5		60351UGHY120001	0
REPRODUCTION NOT PERMITTED ALL RIGHT RESERVED			TOUTE REPRODUCTION NON AUTORISEE EST INTERDITE

REPRODUCTION NOT PERMITTED ALL RIGHT RESERVED