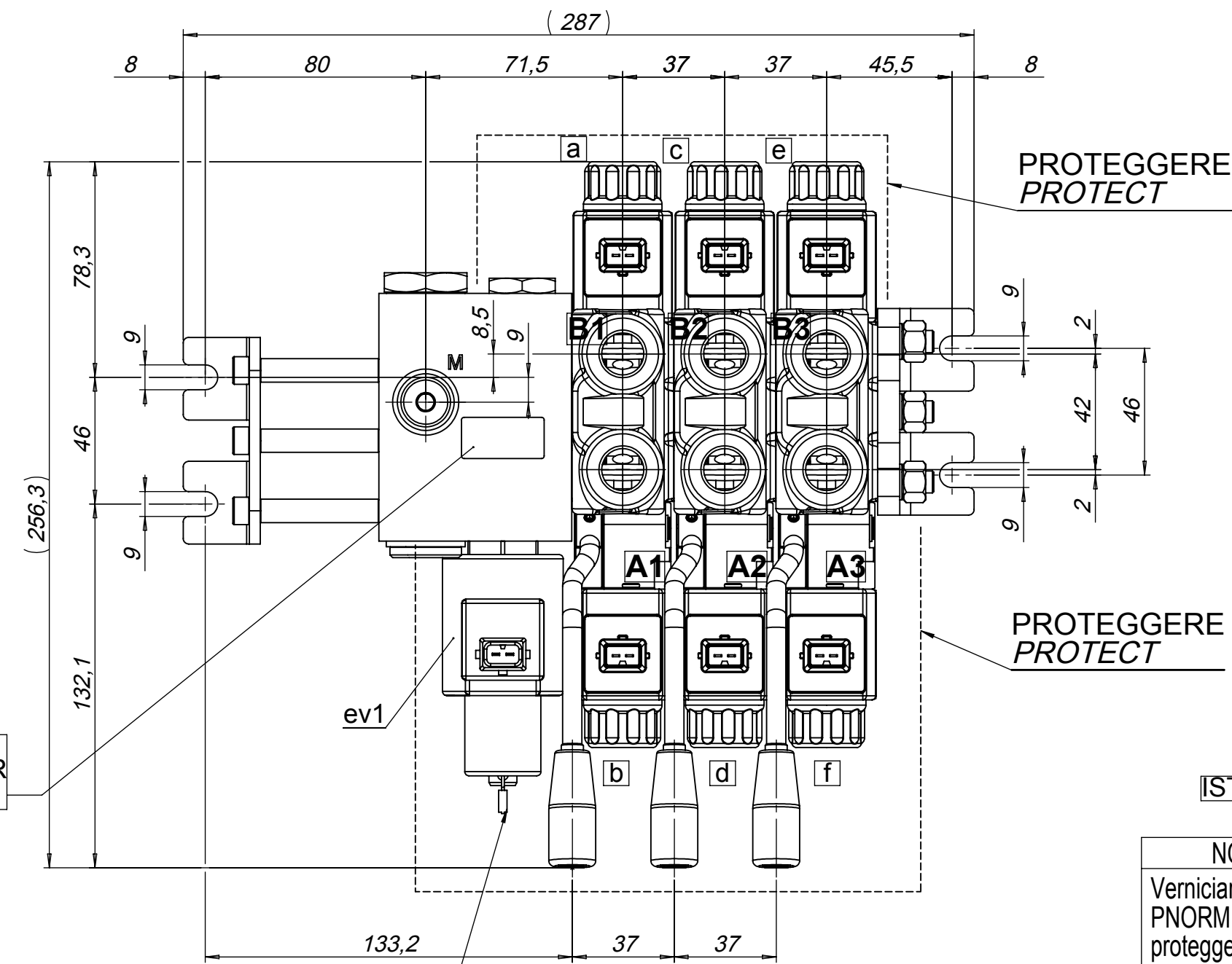
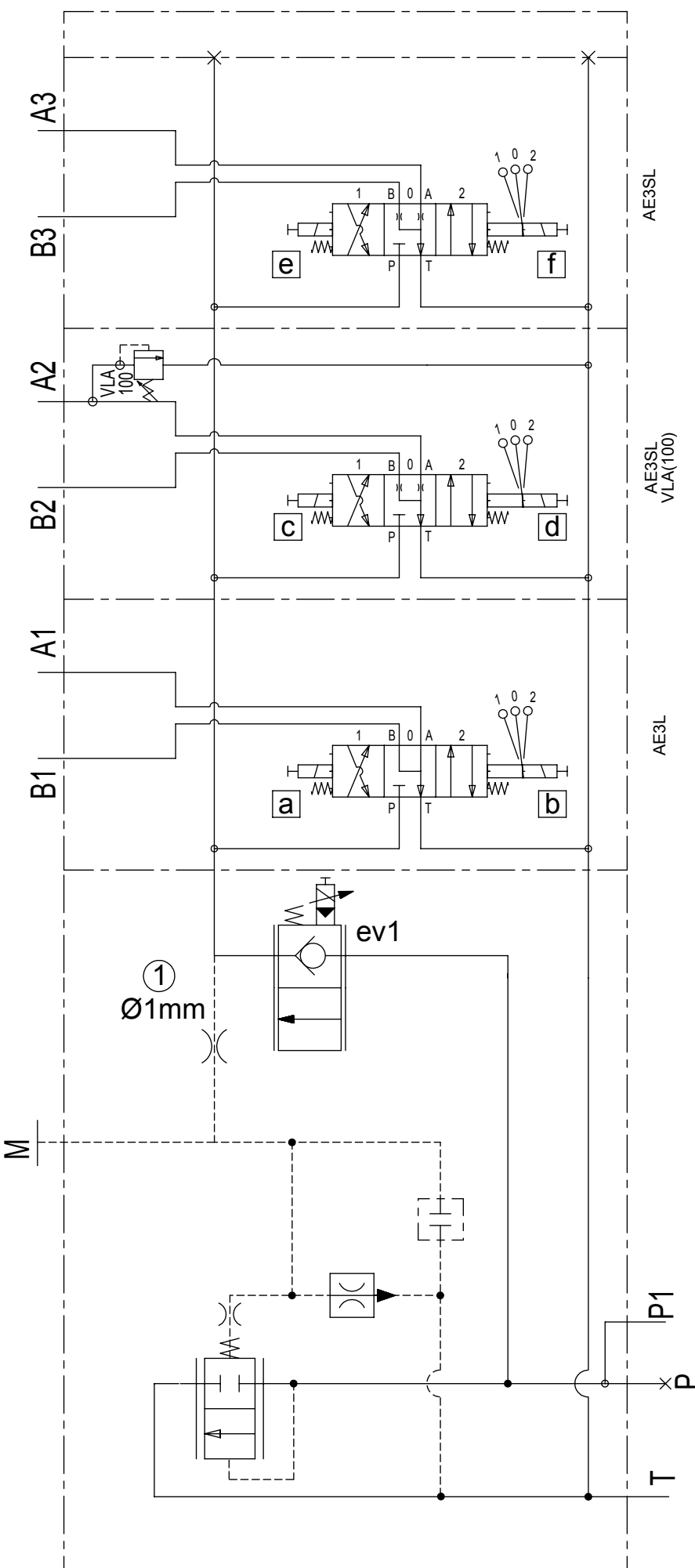


CUSTOMER CODE
EV7326-12V

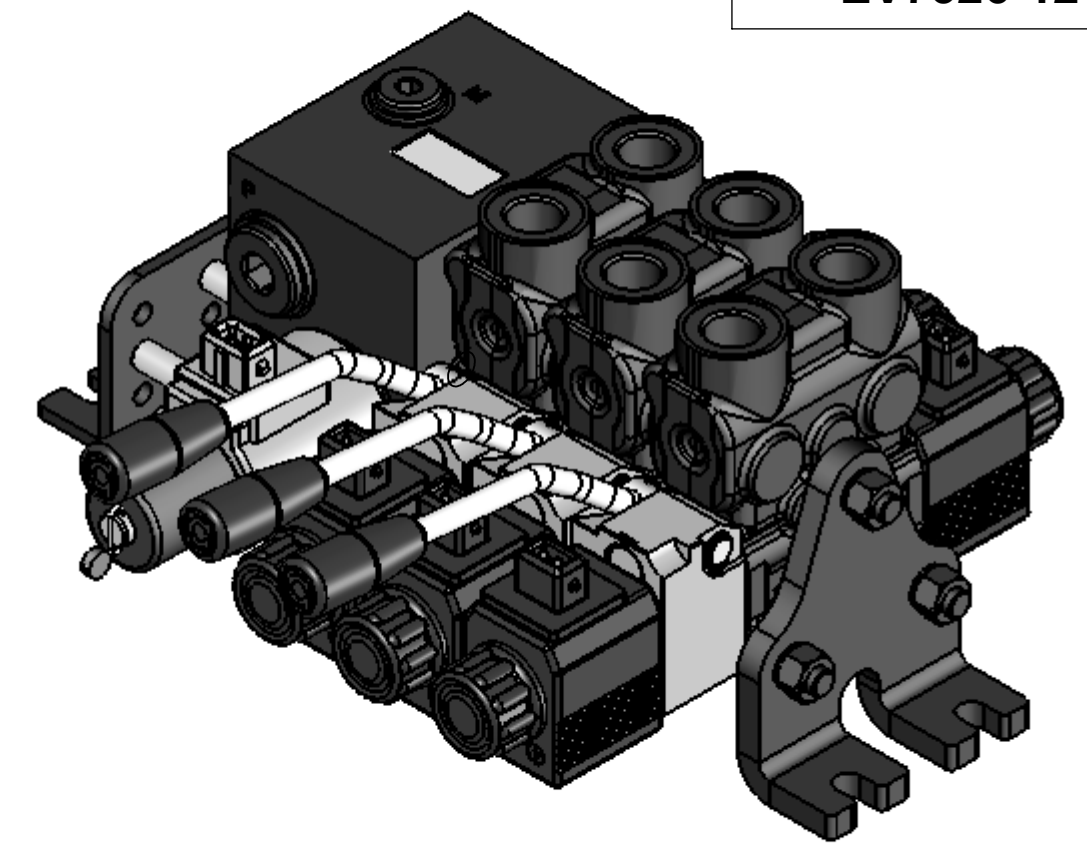


LABEL
CODE
PRODUCTION ORDER
DATE

PIOMBARE DOPO IL COLLAUDO
PLUMBING AFTER TEST

① MINIMUM INLET FLOW:
3,5 L/MIN.

UTENZE PORTS	FILETTATURE THREAD	TAPPI DA RIMUOVERE PRIMA DELL'USO PLUGS TO BE REMOVED BEFORE USE
P - P1 - T	1/2" GAS ISO1179	DO3856101201
A - B	3/8" GAS ISO1179	DO3856103801
M	1/4" GAS ISO1179	-----



ISTRUZIONE DI COLLAUDO: ICUTSI0046-DIN

NOTA PER VERNICIATURA / NOTE FOR PAINTING
Verniciare con smalto nitro colore RAL 9005 secondo capitolato PNORM 01.06.01 e PNORM 01.06.02 proteggendo le parti indicate con: **PROTEGGERE**
Paint with RAL 9005 according to PNORM 01.06.01 and PNORM 01.06.02 protecting parts indicated with: **PROTECT**

COIL SPECIFICATION
ev1

Current Supply Characteristics	PWM
Voltage	12V DC
PWM or Super-imposed Dither Frequency	100 Hz min.
Nominal Resistance (20°C)	6,7 Ohm

a,b,c,d,e,f,

Power	26,5W
Voltage	12V DC

1	AGGIUNTO GRANO M6 CON FORO Ø1mm IN T.E. - INSERITA NOTA A DISEGNO	04/12/2013	S.GALVAN
0	EMISSIONE ISSUE	04/03/2013	S.GALVAN
Rev.	Descrizione / Description	Data/Date	Disegnato/Designed by
DESCRIZIONE / DESCRIPTION DNCE50TP/3 TERV(0)P AE3L AE3SLVLA(100) AE3SL PP1-T 1/2"G- P TAPP. -AB 3/8"G-12V AMP JUNIOR LEVE EMERGENZA SAGOMATA POSIZIONE DIRITTA - VALV. PROPORZ. PIOMBATA T.E. CON CARTUCCIA DI FUGA COMPENSATA - VERNICIATO DI NERO			
		PRODOTTO FINITO 20/18/13 END PRODUCT ISO FDSI 4406.2 1999	FOGLIO / SHEET 1
SCALA / SCALE 1:2	DERIVATO DA / DERIVE FROM	CODICE / CODE DO6D5E3VGL0000002	REV. 1
REPRODUCTION NOT PERMITTED ALL RIGHT RESERVED TOUTE REPRODUCTION NON AUTORISEE EST INTERDITE VIETATE LE RIPRODUZIONI NON AUTORIZZATE			