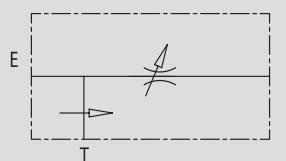


REGOLATORE DI FLUSSO PRIORITARIO A 3 VIE

TIPO / TYPE

RFP3SCHEMA IDRAULICO
HYDRAULIC DIAGRAM3 PORT FLOW
CONTROL VALVE
EXCESS TO TANK**IMPIEGO:**

Valvola che consente di mantenere costante la portata in P ad un valore stabilito, indipendentemente dalla pressione richiesta e dalla portata in entrata alla valvola. La portata in eccesso viene mandata direttamente allo scarico T (serbatoio).

MATERIALI E CARATTERISTICHE:

Corpo: acciaio zincato
Componenti interni: acciaio temprato termicamente e rettificato
Guarnizioni: BUNA N standard
Tenuta: per accoppiamento. Trafilamento minimo (poche gocce al minuto)

MONTAGGIO:

Collegare E all'alimentazione e P alla rete in cui si necessita la regolazione della portata. Collegare T al serbatoio. Per regolare la portata in entrata avvitare o svitare il volantino previo allentamento della ghiera di fermo.

**DIAGRAMMA COMPENSAZIONE
COMPENSATION CURVE****USE AND OPERATION:**

This valve enables to keep "P" flow constant to a certain setting, independently of the required pressure or the inlet flow of the valve. Exceeded flow is drained directly in T (tank).

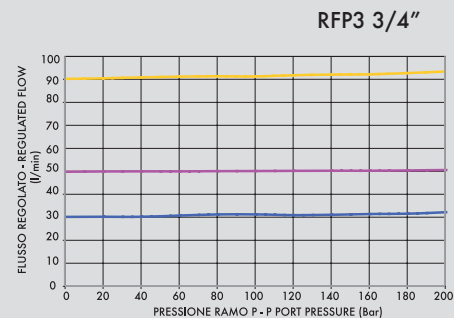
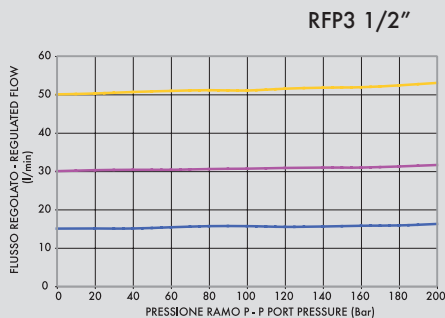
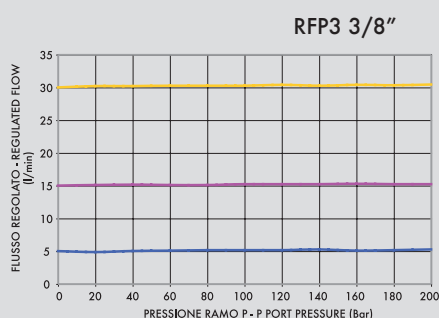
MATERIALS AND FEATURES:

Body: zinc-plated steel
Internal parts: hardened and ground steel
Seal: BUNA N standard
Tightness: by diameter combination. Minor leakage (few drops per minute)

APPLICATIONS:

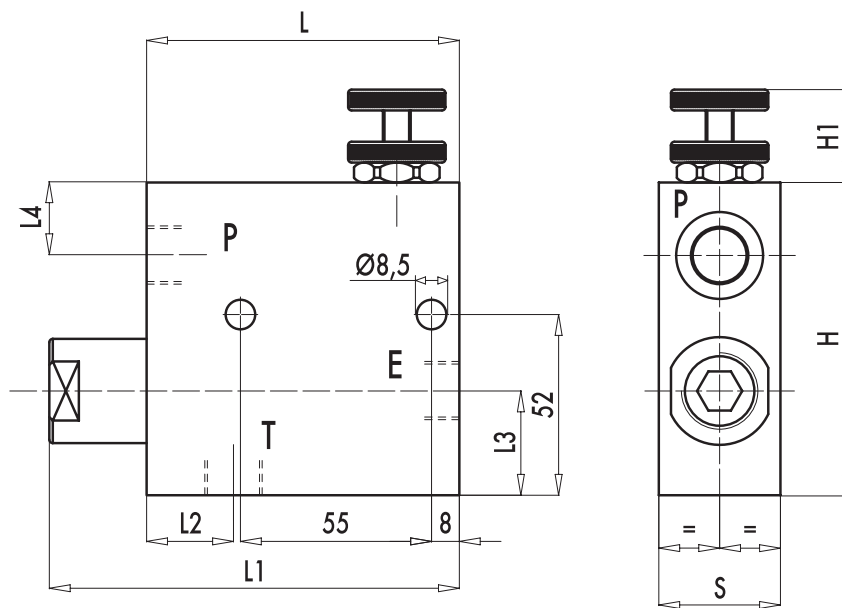
Connect E to the pressure flow and P to the net where flow adjustment is needed. Connect T to the tank. To adjust inlet pressure in P screw in or off hand wheel after loosening the locknut.

Temperatura olio: 50°C - Viscosità olio: 30 cSt
Oil temperature: 50°C - Oil viscosity: 30 cSt





CODICE CODE	SIGLA TYPE	PORTATA MAX ENTRANTE MAX INLET FLOW Lt. / min	PORTATA MAX REGOLATA MAX ADJUSTED FLOW Lt. / min	PRESSIONE MAX MAX PRESSURE Bar
V1110	RFP3 3/8"	60	50	350
V1120	RFP3 1/2"	80	60	350
V1130	RFP3 3/4"	120	100	350



CODICE CODE	SIGLA TYPE	E - P - T GAS	L mm	L1 mm	L2 mm	L3 mm	L4 mm	H mm	H1 mm	S mm	PESO WEIGHT kg
V1110	RPF3 3/8"	G3/8"	90	118	25	32	20	90	40	35	2,170
V1120	RPF3 1/2"	G1/2"	90	118	25	32	20	90	40	35	2,096
V1130	RPF3 3/4"	G3/4"	90	122	27	36	19	102	40	50	3,344