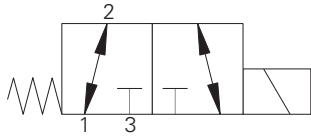


S521(H) - Solenoid valve

Spool type, 3-way, 2-position
Up to 44 L/min (1.15 USgpm) • Up to 210 bar (3000 psi)

A



Operation

In the de-energized position this valve allows flow from port 2 to 1 while port 3 is blocked. In the energized position flow is allowed from port 2 to port 3 while port 1 is blocked.

Performance data

Ratings and specifications

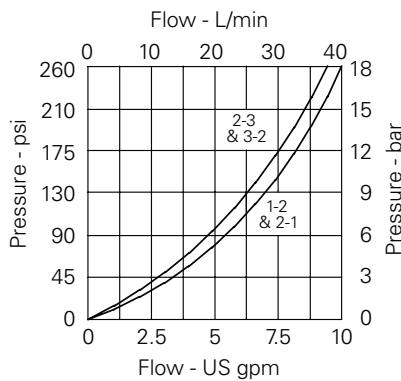
Figures based on Viscosity 32 cST (150 SSU)

Actuator port location	Port 2
Max working pressure	210 bar (3000 psi)
Rated flow	See performance graphs
Nominal flow at $\Delta P = 5$ bar (70 psi)	17 L/min
Internal leakage	Less than 120 ml/min past each land 210 bar differential
Temperature range	-30° to +120°C (-22° to +248°F)
Cavity	C-10-3 (see Section M)
Electrical data	See coil data sheet
Torque cartridge into cavity	30 Nm (22 lbs ft)
Mounting position	Unrestricted
Fluids	All general purpose hydraulics fluids such as: MIL-H-5606, SAE 10, SAE 20 etc
Seal material	Standard nitrile with PTFE back up rings
Filtration	BS5540/4 Class 18/13 (25 micron or better)
Nominal viscosity range	15 to 250 cSt
Standard housing materials	Aluminium alloy
Coil Weight	0.3 kg (0.6 lbs)
Weight	0.2 kg (0.4 lbs)
Seal kit	SK1030 (Nitrile) SK1030V (Viton®)
Coil part number	C16-*/19 (S521) C16-*/29 (S521H)
Coil voltage available	12, 24 VDC, 110, 220, VAC*

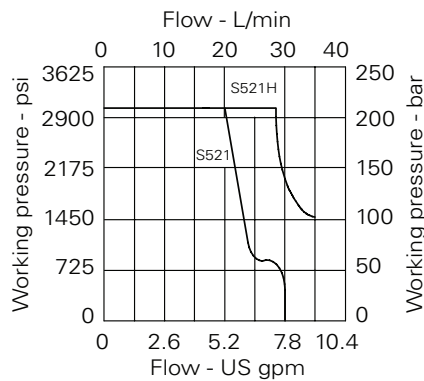
Viton is a registered trademark of E.I. DuPont

*AC coils must be used with a rectifying connector

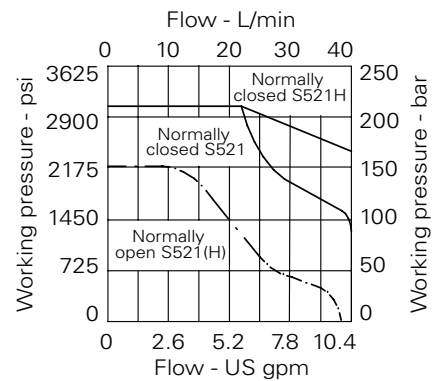
Pressure drop



Performance Selector Mode



Performance Normally closed and Normally open modes

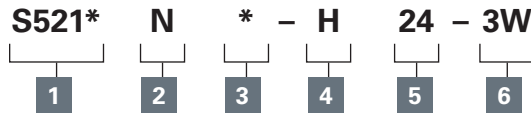


Where measurements are critical request certified drawings. We reserve the right to change specifications without notice.

S521(H) - Solenoid valve

Spool type, 3-way, 2-position
Up to 44 L/min (11.5 USgpm) • Up to 210 bar (3000 psi)

Model code



A

1 Function

S521 - Standard valve
S521(H) - Heavy duty valve

2 Seal material

N - Nitrile
V - Viton®

3 Manual Override

2 - Screw
(Consult factory for availability).
See page A-960.

4 Coil Termination

H - DIN43650
F - Flying leads
DM - Deutsch moulded

Other terminations available on request.

5 Voltage

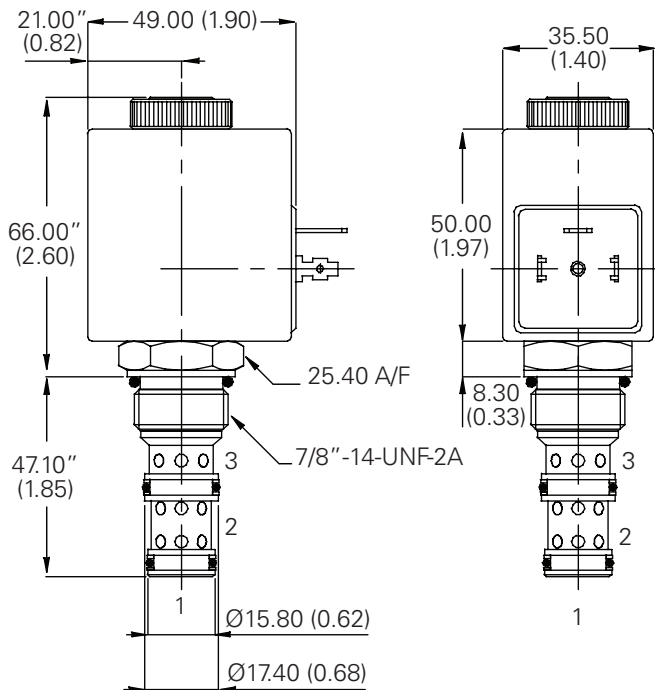
12 - 12 VDC
24 - 24 VDC
110 - 110 VAC
220 - 220 VAC

6 Port size

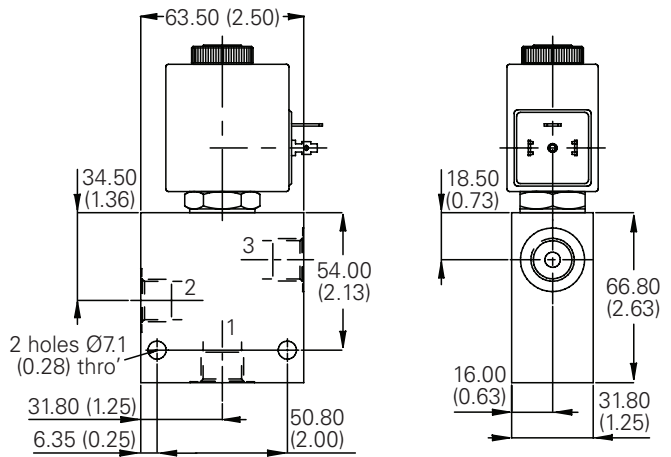
Code	Port size	Housing number - body only
Aluminium		
3W	3/8" BSP	B18982
4W	1/2" BSP	B19358
8T	1/2" SAE	B19360

Dimensions - mm (inch)

Cartridge only



Installation drawing



Where measurements are critical request certified drawings. We reserve the right to change specifications without notice.