



OLEODINAMICA  
PEDERZANI & ZINI

## AIR OPERATED CLUTCH UNIT

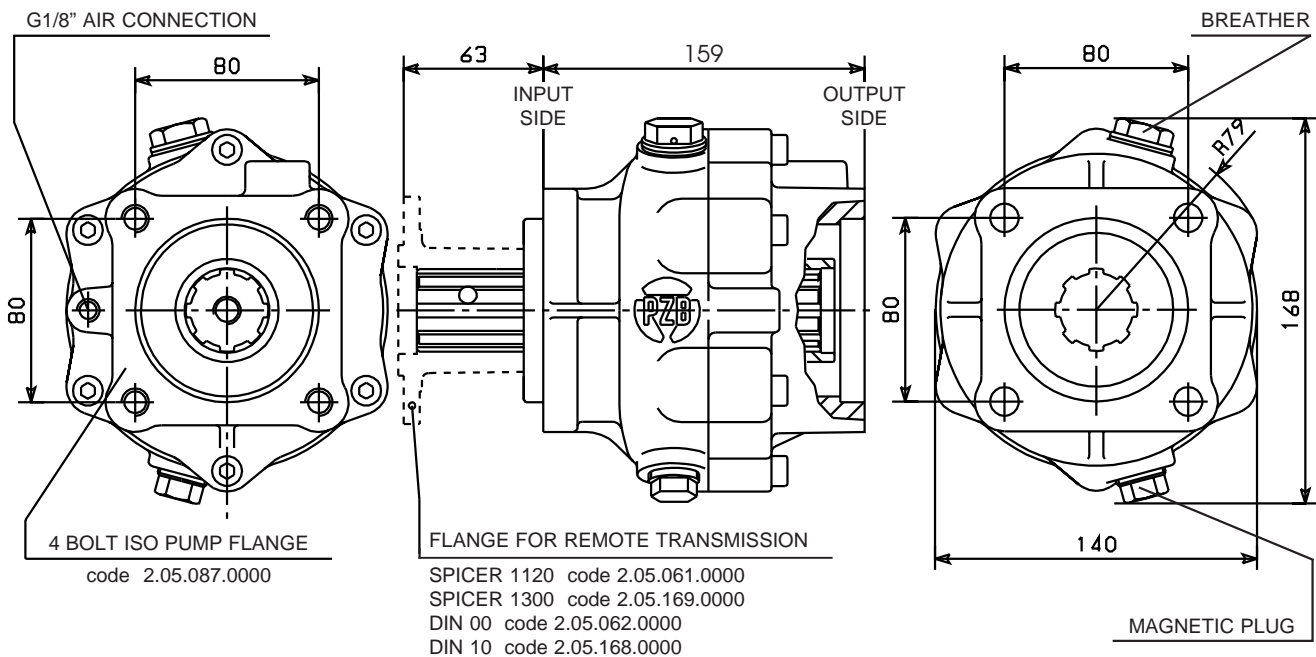
# 3.5.1.007

- ✓ Air operated clutch unit.
- ✓ Fits ISO hydraulic pump flanges and all standard drive shafts.
- ✓ Used in applications requiring to:
  - frequently connect and disconnect the driven equipment;
  - connect and disconnect the drive from outside the driver's cab.
- ✓ Reduces the mechanical wear.
- ✓ Operates in combination with gearbox and engine driven PTOs, split-shaft units, splitter boxes and auxiliary engines.





## AIR OPERATED CLUTCH UNIT CODE 3.5.1.007



### INSTALLATION

The Air Operated Clutch Unit is suitable for both direct mounting onto the PTO and for remote drive by means of a prop-shaft.

Install the Clutch Unit making sure that the breather is facing upward.

Fill with 30 gr. **SAE 80W90 MAX.** gearbox oil through the breather plug.

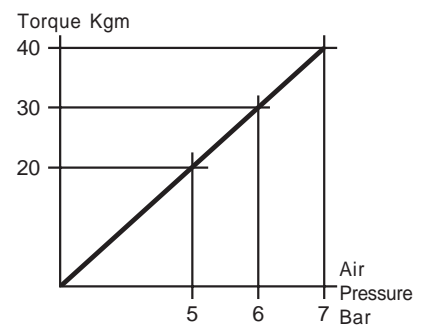
### AIR CONNECTION

Connect the Clutch Unit to its air control switch.

Using a pressure regulator the air pressure shall be adjusted related to the maximum transmitted torque according to the enclosed diagram.

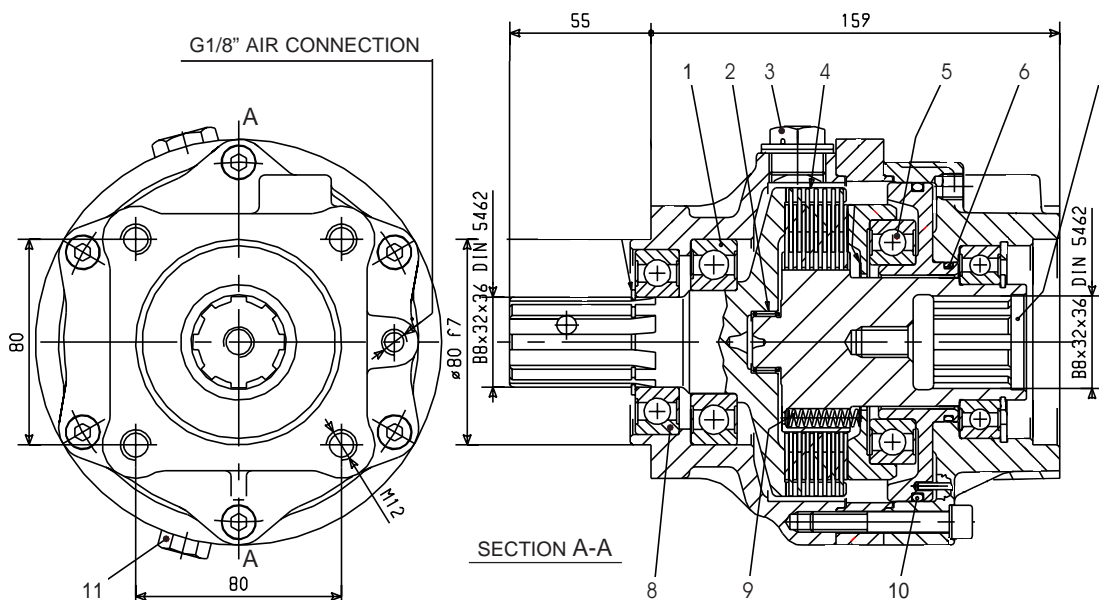
Example: set the pressure regulator at 6 bar to transmit 30 kgm.

Transmitted torque: 40 kgm max.



### REMARKS

- 1) It is advisable to insert the Clutch while no load is being transmitted and at the lowest possible r.p.m., bearing in mind that the r.p.m. differential and the applied load during the start have direct influence on the induced stress to the clutch discs.
- 2) Remote transmissions should be fitted in accordance with the installation guidelines for propshafts, relating to the following aspects:
  - a) static and dynamic balance;
  - b) yokes in phase;
  - c) sliding joint for length adjustment;
  - d) equal angles - parallel flanges;
  - e) angles not exceeding 8°.



REF.	CODE	DESCRIPTION	QT.	REF.	CODE	DESCRIPTION	QT.
1	0.10.01.048.00	Bearing 6208 2RSR	1	7	1.13.01.167.00	Shaft	1
2	0.10.06.020.00	Needle cage K20x24x10	1	8	0.10.01.038.00	Bearing 6207 2RSR	1
3	0.12.01.080.00	Breather with OR TMD-22.15	1	9	1.28.01.114.00	Spring	3
4	0.00.10.001.00	Clutch discs	1	10	0.08.02.127.00	O-Ring OR 4462 Viton	1
5	0.10.01.050.00	Bearing 6012 2RSR	1	11	0.12.01.002.00	Plug FIAT 1/43262/11	1
6	0.08.02.126.00	O-Ring OR 3225 Viton	1				

## CLUTCH UNIT REGULAR SERVICING

**AFTER THE INITIAL 100 OPERATING HOURS** - Oil change as per the following instructions.

- Remove the magnetic plug (item 11) and clean metal particles before refitting.
- Drain the oil completely, then fit the magnetic plug into place again.
- Remove the plastic breather cap (item 3) and eliminate all possible abstractions. Fill the unit with 30 gr. gearbox oil with viscosity **SAE 80W90 MAX.** Fit the breather cap.

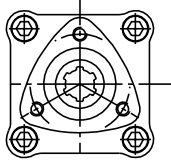
**ONCE EVERY 300 OPERATING HOURS** - Oil change as per the following instructions.

- Remove the magnetic plug (item 11) and clean metal particles before refitting.
- Drain the oil completely, then fit the magnetic plug into place again.
- Remove the plastic breather cap (item 3) and eliminate all possible abstractions. Fill the unit with 30 gr. gearbox oil with viscosity **SAE 80W90 MAX.** Fit the breather cap.

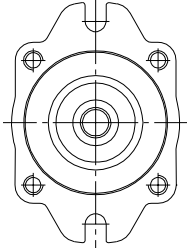
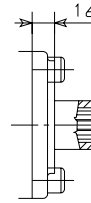
**ONCE EVERY 900 OPERATING HOURS** - Take apart and open the Clutch Unit to inspect the following components:

- CLUTCH DISCS (item 4):** slight grooves up to 0,2 mm deep should be removed. Hand grind using # 100 sandpaper. Fit a new disc if the grooves are deeper than 0,2 mm.  
USE PART No. 0.00.10.001.00, 1 off
- BEARING (item 5):** fit a new bearing in case of excessive wear, rough rolling or noisy action.  
USE PART No. 0.10.01.050.00, 1 off
- BEARING (item 1):** fit a new bearing in case of excessive wear, rough rolling or noisy action.  
USE PART No. 0.10.01.048.00, 1 off
- NEEDLE CAGE (item 2):** lubricate using TECNOLUBE POLYMER 400 grease or equivalent.
- BEARING (item 8):** in case of prop-shaft drive check the bearing's shield for integrity. Fit a new bearing in case of damages or infiltrations.  
USE PART No. 0.10.01.038.00, 1 off
- O-RING SEAL (item 6 and 10):** fit new seal.  
USE PART No. 0.08.02.126.00, 1 off and 0.08.02.127.00, 1 off
- SPRINGS (item 9):** fit new springs.  
USE PART No. 1.28.01.114.00, 3 off
- SHAFT (item 7):** inspect for possible traces left by the clutch discs (item 4) due to the transmitted torque. Fit a new shaft if the grooves are deeper than 0,5 mm.  
USE PART No. 1.13.01.167.00, 1 off

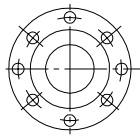
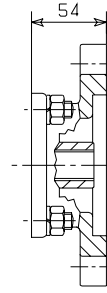
## OUTPUT OPTIONS



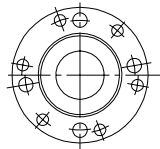
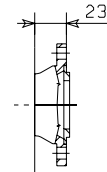
**3 BOLT PZB PUMP ADAPTOR**  
code 2.05.324.0000



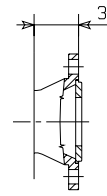
**SAE B PUMP ADAPTOR**  
code 3.5.2.039.0000  
**ON REQUEST**  
**SAE B-B PUMP ADAPTOR**  
code 3.5.2.040.0000



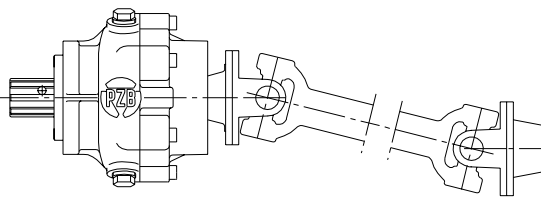
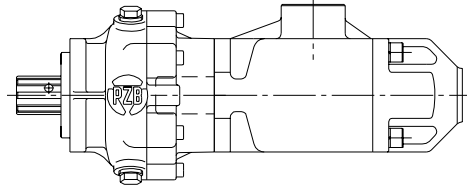
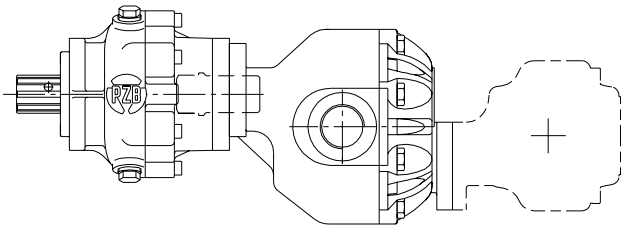
**DIN 00/SPICER 1120**  
**FLANGE FOR REMOTE TRANSMISSION**  
code 2.05.330.0000



**DIN 10/SPICER 1300**  
**FLANGE FOR REMOTE TRANSMISSION**  
code 2.05.323.0000



## TYPICAL OUTPUT APPLICATIONS



COMPRESSOR  
CARGO PUMP  
JETTING PUMP  
VACUUM PUMP  
GENERATOR / ALTERNATOR

## TYPICAL INPUT APPLICATIONS

