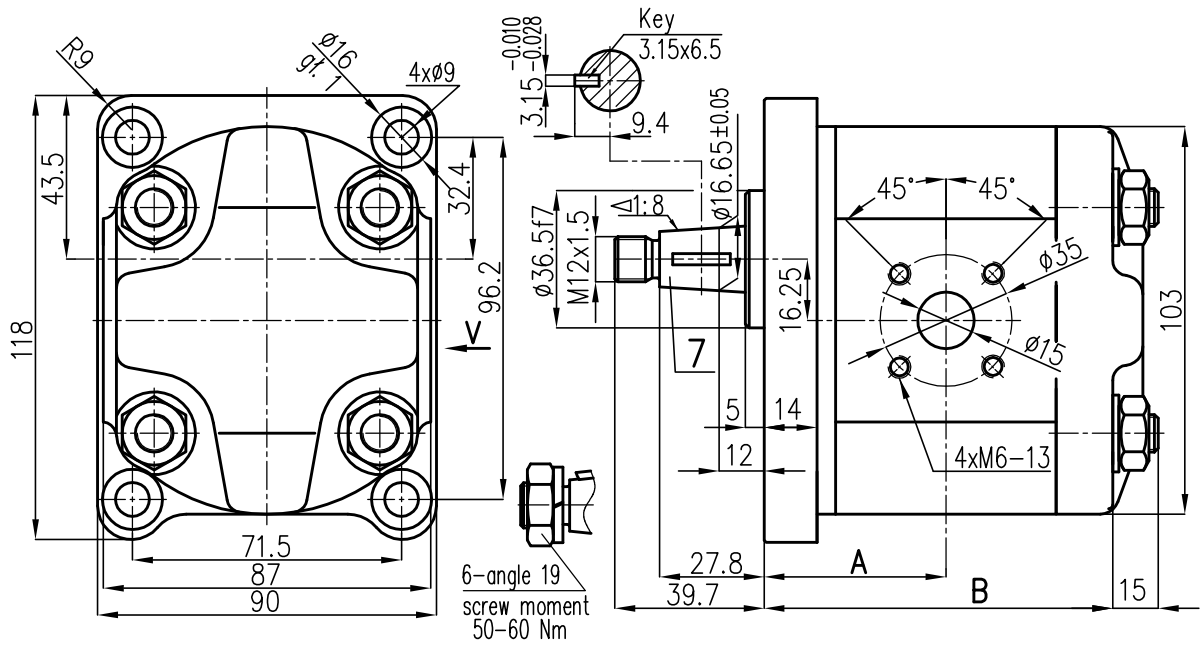
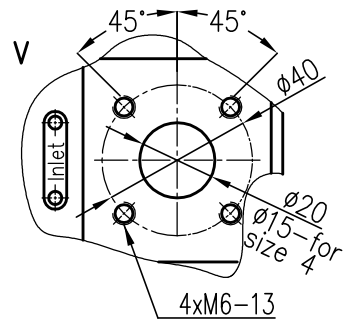


2PZ4-7a technical drawing



Geom. displac. ccm/rot	Pump designation	Dimmension	
		A	B
4	2PZ4-4/28-x-z76	44.0	83.5
6.3	2PZ4-6.3/28-x-z76	45.6	87.2
8	2PZ4-8/28-x-z76	46.9	89.7
11	2PZ4-11/28-x-z76	49.1	94.1
14	2PZ4-14/25-x-z76	51.2	98.4
16	2PZ4-16/22-x-z76	52.7	101.4
20	2PZ4-20/18-x-z76	55.7	107.3



x - direction of rotation: 1 - counter clockwise; 2-clockwise
z - shaft: 7 - 1:8 taper (key 3.15)
8 - splined B17x14xe9 acc.to DIN 5482

