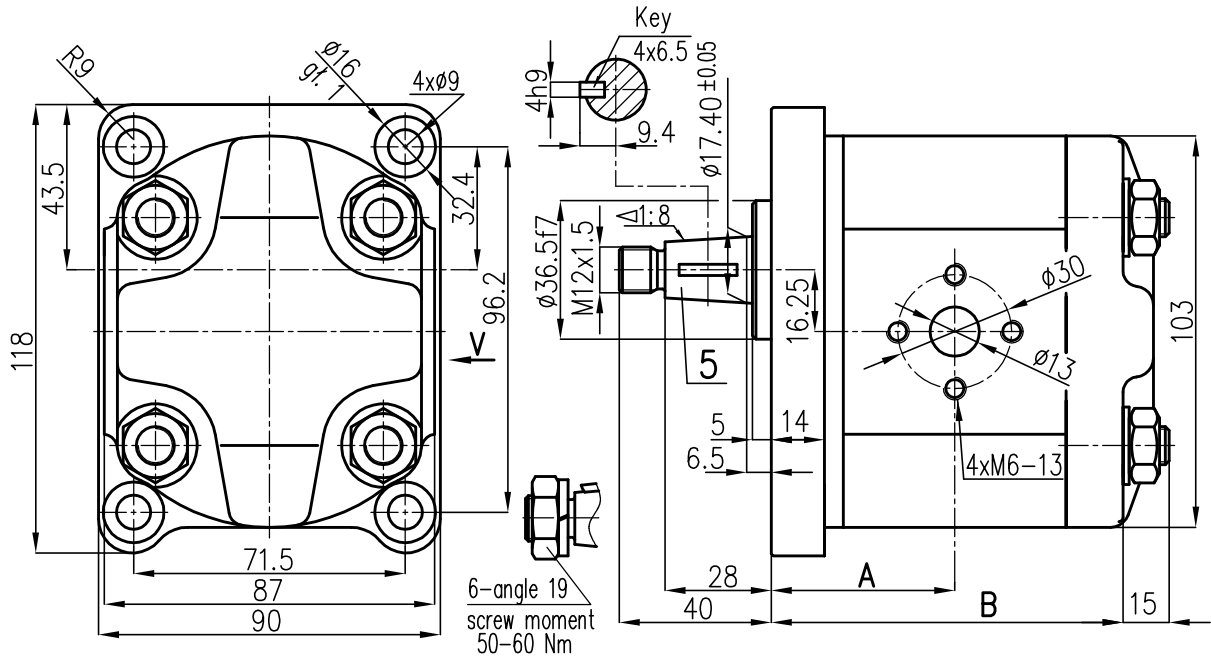


# 2PZ4-7 technical drawing



Geom. displac. ccm/rot	Pump designation	Dimension				
		A	B	ØC	ØD	d
4	2PZ4-4/28-x-z75	44.0	83.5	Ø13	Ø30	M6
6.3	2PZ4-6.3/28-x-z75	45.6	87.2			
8	2PZ4-8/28-x-z75	46.9	89.7			
11	2PZ4-11/28-x-z75	49.0	94.1	Ø20	Ø40	M8
14	2PZ4-14/25-x-z75	51.2	98.4			
16	2PZ4-16/22-x-z75	52.7	101.4			
20	2PZ4-20/18-x-z75	55.7	107.3			

x - direction of rotation: 1 - counter clockwise; 2 - clockwise  
z - shaft: 5 - 1:8 taper (key 4)  
8 - splined B17x14xe9 acc.to DIN 5482

