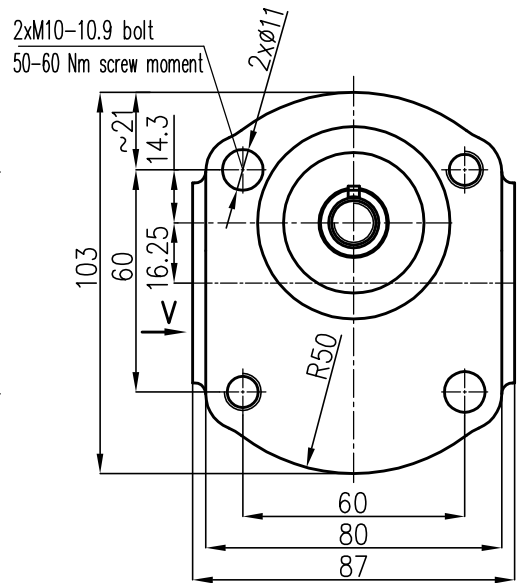
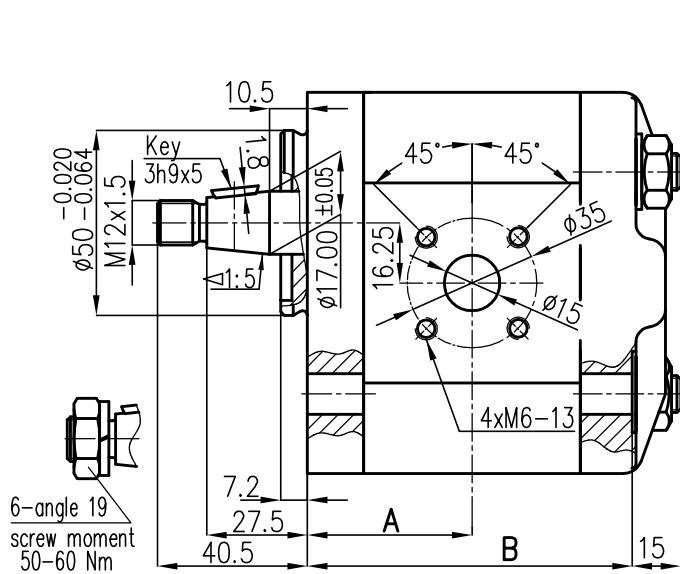
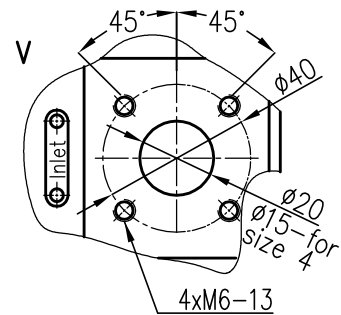


2PZ4-4 technical drawing



Geom. displac. ccm/rot	Pump designation	Dimension	
		A	B
4	2PZ4-4/28-x-z46	40.2	80.1
5,5	2PZ4-5.5/28-x-z46	41.2	82.2
6.3	2PZ4-6.3/28-x-z46	41.8	83.4
8	2PZ4-8/28-x-z46	43.1	85.9
11	2PZ4-11/28-x-z46	45.3	90.3
14	2PZ4-14/25-x-z46	47.4	94.6
16	2PZ4-16/22-x-z46	48.9	97.6
20	2PZ4-20/22-x-z46	51.9	103.5
22	2PZ4-22/22-x-z46	53.3	106.4



x - direction of rotation: 1-counter clockwise; 2-clockwise
 z - shaft: 6-1:5 taper
 8-splined B17x14xe9 acc.to DIN 5482

