

SERIE XPA-H 3.1.2.5.

CODICE DI ORDINAZIONE / DECODING

3.1.2.5 . XXX . X . 0 . 0 . 0

DIN
5 4 8 2

XPA-H 10
XPA-H 15
XPA-H 25

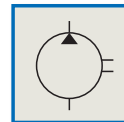
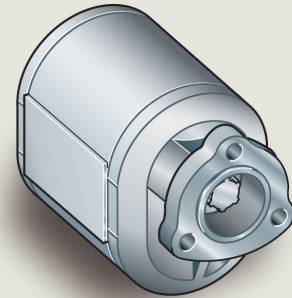
ALLESTIMENTI SPECIALI/SPECIAL OPTIONS
0 = SENZA VALVOLA ELETTRICA/WITHOUT ELECTRIC VALVE

ROTAZIONE/ROTATION
1 = SINISTRO/ANTICLOCKWISE
2 = DESTRO/CLOCKWISE

CILINDRATA/DISPLACEMENT

CODICE BASE/BASIC CODE

Pompa ad Ingranaggi Gear Pump

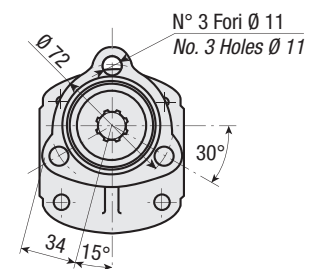
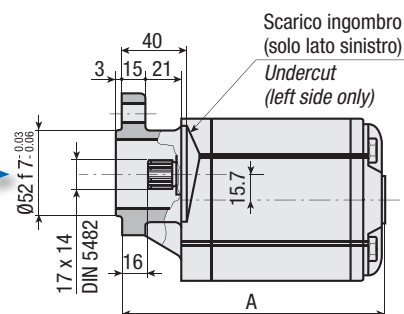
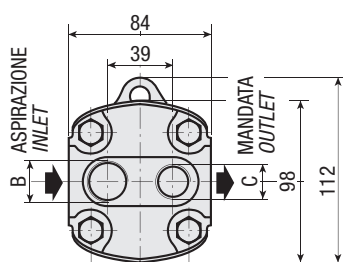


CARATTERISTICHE E DATI TECNICI / SPECIFICATIONS AND TECHNICAL DATA

| TIPO TYPE | CODICE CODE | CILINDRATA DISPLACEMENT cm ³ /rev. | A mm | B ASPIRAZIONE INLET | C MANDATA OUTLET | PESO WEIGHT kg |
|--------------|---------------------|---|---------|---------------------------|------------------------|----------------------|
| XPA-H 10 | 3.1.2.5.010.X.0.0.0 | 10 | 139 | 3/4" G | 1/2" G | 2.7 |
| XPA-H 15 | 3.1.2.5.015.X.0.0.0 | 15 | 148 | 3/4" G | 1/2" G | 3.0 |
| XPA-H 25 | 3.1.2.5.025.X.0.0.0 | 25 | 164.5 | 3/4" G | 1/2" G | 3.2 |

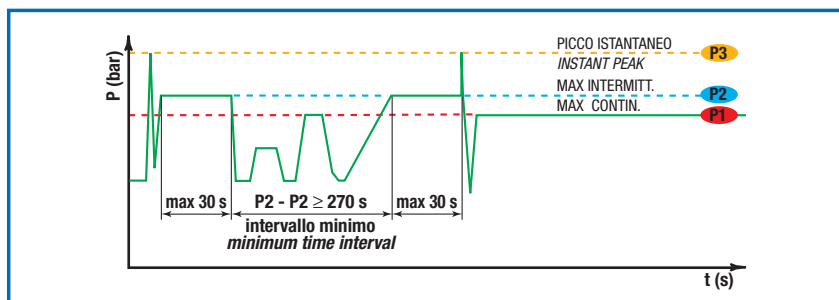
KIT DI MONTAGGIO MOUNTING KIT

2.05.P486.0000



DATI TECNICI / TECHNICAL DATA

ESEMPIO CICLI LAVORO / EXAMPLE OF WORKING CYCLES



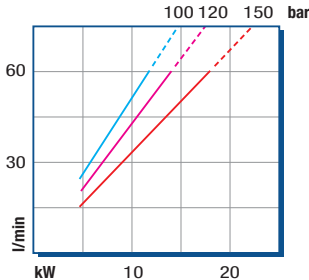
| | |
|---|--------------------------------------|
| Pressione d'aspirazione: <i>Inlet pressure:</i> | 0.7 ÷ 1.5 bar (assoluti/absolute) |
| Campo viscosità lavoro: <i>Operating viscosity range:</i> | 12 ÷ 100 cSt |
| Temperatura fluido °C (t): <i>Fluid temperature °C (t):</i> | -10° + 80° C |

| Pressione Lavoro <i>Working Press.</i> | P2 | Contaminazione / <i>Contamination</i> | | Filtro / <i>Filter</i> βx = 75 |
|---|----|---------------------------------------|----------|-----------------------------------|
| | | NAS 1638 | ISO 4406 | |
| ≤ 200 bar | | 12 | 21/18 | 40 μm |

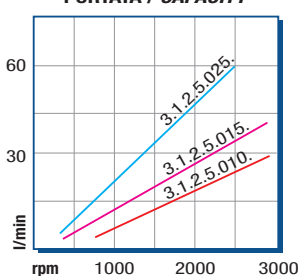
◀ **FILTRAZIONE CONSIGLIATA** (ritorno o mandata)
RECOMMENDED FILTERING (return or outlet)

| TIPO / TYPE | | | XPA-H 10 | XPA-H 15 | XPA-H 25 |
|---|----------------------------------|---|----------|----------|----------|
| Cilindrata <i>Displacement</i> | Vg | cm ³ /n cm ³ /rev. | 10 | 15 | 25 |
| Pressione massima continua <i>Max continuous operating pressure</i> | P1 | bar | 190 | 150 | 120 |
| Pressione massima intermittente <i>Max intermitt. operating pressure</i> | (max 30 s) P2 | | 220 | 170 | 150 |
| Pressione massima di picco <i>Max peak pressure</i> | (≤ 0.1 s) P3 | | 270 | 210 | 180 |
| Velocità massima intermittente <i>Max intermittent speed</i> | (P ≤ 20 bar) n3 | n/min r.p.m. | 3000 | 3000 | 2500 |
| Velocità massima continua <i>Max continuous speed</i> | (≤ P1) n1 | | 1500 | 1500 | 1500 |
| Velocità minima intermittente <i>Min intermittent speed</i> | (≤ P2 x 0.5) (max 30 s) n4 | | 800 | 650 | 650 |

POTENZA ASSORBITA / *ABSORBED POWER*



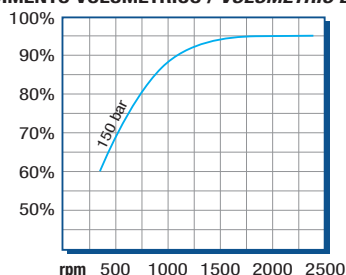
PORTATA / *CAPACITY*



RILIEVI ESEGUITI CON OLIO
ISO VG 46 A 50° C (√=30 cSt)
THE ABOVE SPECIFICATIONS
REFER TO OIL TYPE ISO
VG 46 AT 50° C (√=30 cSt)

DIAGRAMMI / DIAGRAMS

RENDIMENTO VOLUMETRICO / *VOLUMETRIC EFFICIENCY*



COPPIA ASSORBITA / *INPUT TORQUE*

