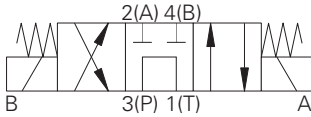


# SV9M-10 - Solenoid valve

Spool type, 4-way, 2-position  
Up to 25 L/min (6.5 USgpm) • 210 bar (3000 psi)

A

## SV9M-10-A

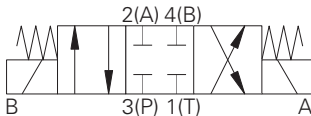


### Operation

In the central de-energized position. Flow is allowed from inlet port 3 to port 1 and ports 2 and 4 are blocked. When solenoid 'B' is energized flow is allowed from port 3 to 4 and port 2 to 1.

When solenoid 'A' is energized flow is allowed from port 3 to port 2 and from port 4 to port 1.

## SV9M-10-E

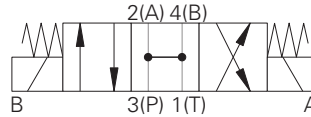


### Operation

In the de-energized position all ports are closed. When solenoid 'A' is energized flow is allowed from port 3 to port 4 and port 2 to port 1.

When solenoid 'B' is energized flow is allowed from port 3 to port 2 and from port 4 to port 1.

## SV9M-10-B

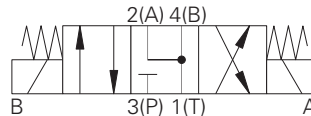


### Operation

In the de-energized position all ports are open. When solenoid 'A' is energized flow is allowed from port 3 to port 4 and port 2 to port 1.

When solenoid 'B' is energized flow is allowed from port 3 to port 2 and from port 4 to port 1.

## SV9M-10-F



### Operation

In the de-energized (center) position, port 1, port 2, and port 4 are open to each other while port 3 is blocked. When solenoid A is energized, flow is directed from port 3 to port 4 and from port 2 to port 1. When solenoid B is energized, flow is directed from port 3 to port 2 and from port 4 to port 1.

## Performance data

### Ratings and specifications

Figures based on Viscosity 32 cST (150 SSU)

Max working pressure	210 bar (3000 psi)
Rated flow	See performance graphs
Nominal flow A, E, F	25 L/min (6.5USgpm)
Nominal flow B	34 L/min (8.9 USgpm)
Internal leakage	Less than 120 ml/min past each land 210 bar differential
Temperature range	-30° to +120°C (-22° to +248°F)
Cavity	C-10-4 (See Section M)
Torque cartridge into cavity	30 Nm (22 lbs ft)
Mounting position	Unrestricted
Nominal viscosity range	15 to 250 cSt
Coil weight	0.3 kg (0.6 lbs) two per valve
Cartridge weight	0.25 kg (0.55 lbs)
Fluids	All general purpose hydraulic fluids such as MIL-H-5606, SAE 10, SAE 20 etc
Filtration	BS5540/4 Class 18/13 (25 micron or better)
Seal kit	SK1034 (Nitrile) SK1034V (Viton)

Viton is a registered trademark of E.I. DuPont

\*AC coils must be used with a rectifying connector

Where measurements are critical request certified drawings. We reserve the right to change specifications without notice.

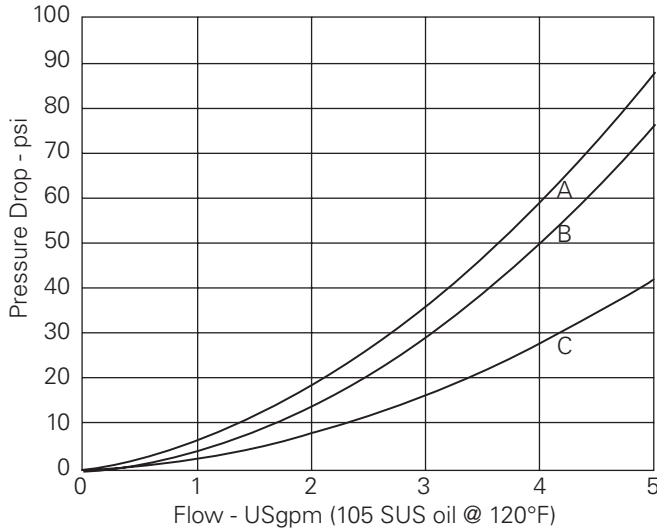
# SV9M-10 - Solenoid valve

Spool type, 4-way, 2-position  
Up to 25 L/min (6.5 USgpm) • 210 bar (3000 psi)

A

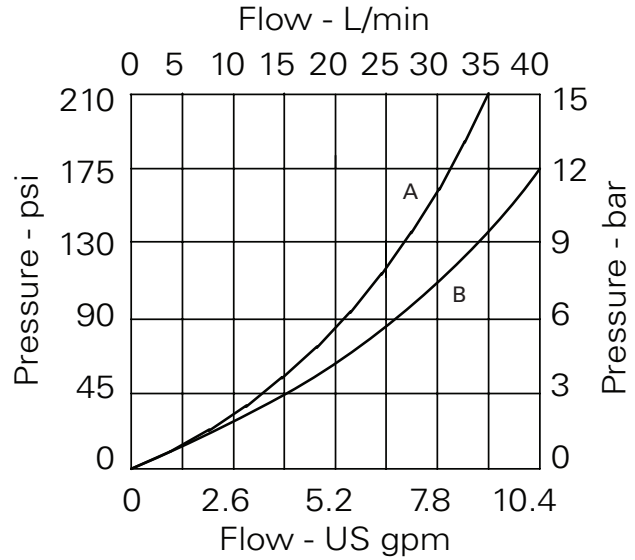
## Pressure drop

### SV9M-10-A



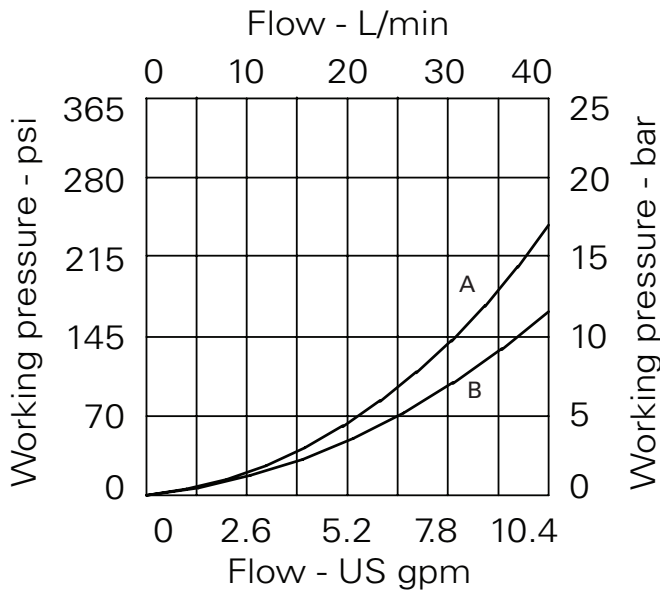
- A** - Port 3 to port 1, de-energized
- B** - Port 3 to port 2, port 3 to port 4
- C** - Port 2 to port 1, port 4 to port 1

### SV9M-10-B



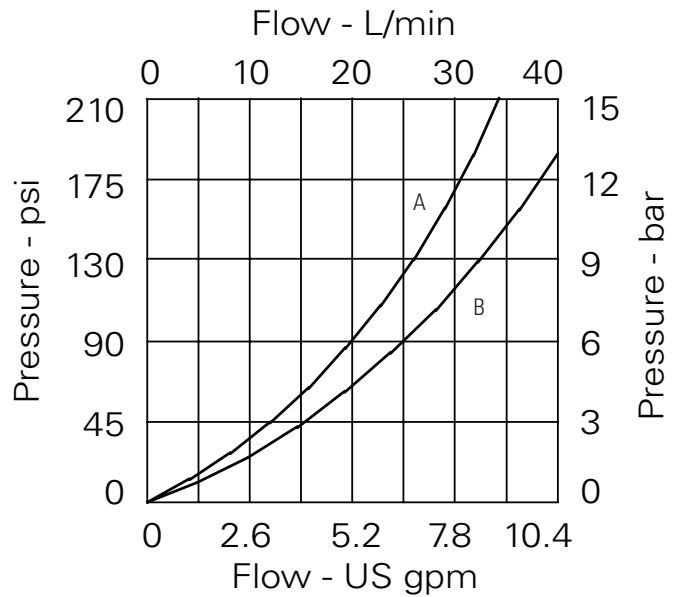
- A** - Spool shifted port 3-2, port 3-4 and port 2-1 and port 4-1
- B** - Spool centered port 2-1 and port 4-1

### SV9M-10-E



- A** - Port 3 to port 2 or port 4
- B** - Port 2 to port 4 or port 1

### SV9M-10-F



- A** - Spool shifted port 3-2, port 3-4 and port 2-1 and port 4-1
- B** - Spool centered port 3-2, port 3-4 and port 2-1 and port 4-1

Where measurements are critical request certified drawings. We reserve the right to change specifications without notice.

# SV9M-10 - Solenoid valve

Spool type, 4-way, 2-position  
Up to 32 L/min (8.5 USgpm) • 210 bar (3000 psi)

A

## Model code

**SV9M - 10 \* - \* \* - \* \*\* - \*\*\*\* \* L 00 - 00**

1 2 3 4 5 6 7 8 9 10 11 12

### 1 Function

**SV9M** - Solenoid valve

### 2 Size

**10** - 10 size

### 3 Seal material

**N** - Buna-N

**V** - Viton

### 5 Manual override option

**0** - No manual override

**M** - Manual override

For valve dimensions with manual override, see pages A-961.

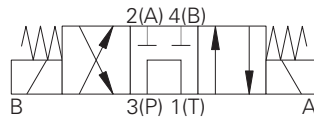
### 6 Housing material

**0** - Cartridge only

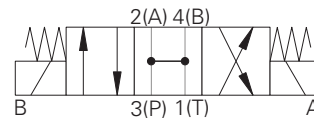
**A** - Aluminum

### 4 Spool center condition

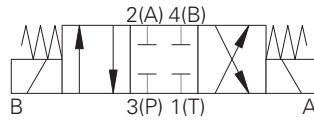
**A**



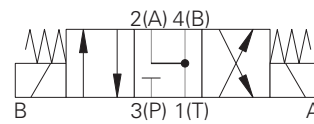
**B**



**E**



**F**



### 7 Port sizes

Code	Port size	Housing number
Aluminium		
<b>0</b>	Cartridge only	
<b>3G</b>	3/8" BSP	B19240
<b>4G</b>	1/2" BSP	B19228
<b>8T</b>	1/2" SAE	B19229

### 8 Voltage rating<sup>1</sup>

**000** - No coil

**012D** - 12VDC

**024D** - 24VDC

**012B** - 12VDC/w diode\*

**024B** - 24VDC/w diode\*

\*Optional arc suppression diode.

### 9 Connector types<sup>1</sup>

**0** - No coil

**W** - Leadwire

**N** - Deutsch male, DT04-2P, integrated

### 10 Coil series<sup>1</sup>

**0** - No Coil

**L** - 10 series, 28W Large ToughCoil

### 11 Coil special features<sup>1</sup>

**00** - None

### 12 Valve special features<sup>1</sup>

**00** - None

<sup>1</sup> These model digits are not stamped on the valve.

Where measurements are critical request certified drawings. We reserve the right to change specifications without notice.

# SV9M-10 - Solenoid valve

Spool type, 4-way, 2-position  
Up to 32 L/min (8.5 USgpm) • 210 bar (3000 psi)

## Dimensions

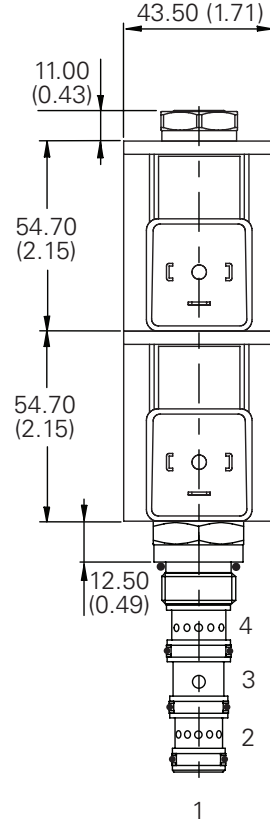
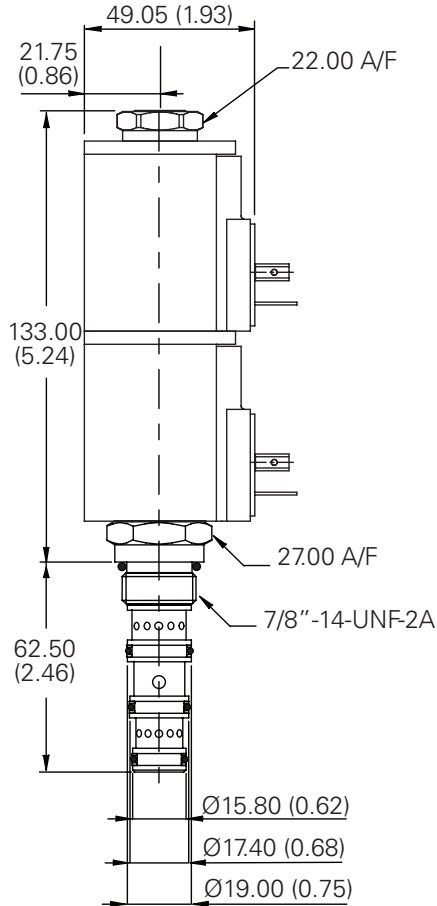
mm (inch)

This valve uses the L series, 30W coil.

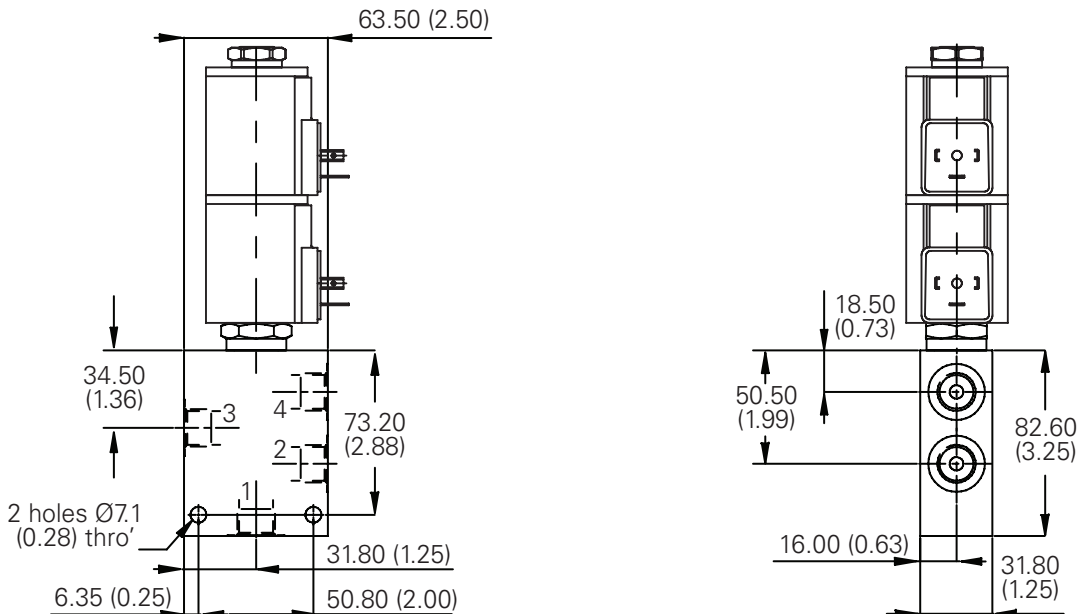
## Spare parts

Coil nut	6025028-001
----------	-------------

## Cartridge only



## Installation drawing (Steel)



Where measurements are critical request certified drawings. We reserve the right to change specifications without notice.