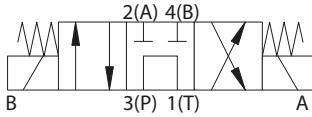


SV9-10 - Solenoid valve

Spool type, 4-way, 2-position
Up to 23 L/min (6 USgpm) * 210 bar (3000 psi)

A

SV9-10-A

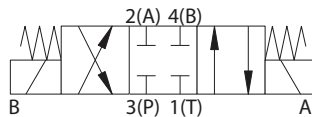


Operation

In the de-energized position, this valve allows flow from port 3 to port 1 and blocks ports 2 and 4. When solenoid 1 (S1) is energized, flow is directed from port 3 to port 2 and from port 4 to port 1.

When solenoid 2 (S2) is energized, flow is directed from port 3 to port 4 and from port 2 to port 1.

SV9-10-E

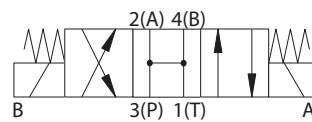


Operation

In the de-energized (center) position, all ports are blocked. When solenoid 1 (S1) is energized, flow is directed from port 3 to port 4 and from port 2 to port 1.

When solenoid 2 (S2) is energized, flow is directed from port 3 to port 2 and from port 4 to port 1.

SV9-10-B

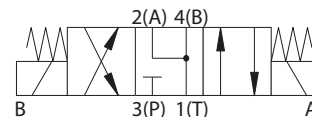


Operation

In the de-energized position, all ports are open to each other. When solenoid 1 (S1) is energized, flow is directed from port 3 to port 4 and from port 2 to port 1.

When solenoid 2 (S2) is energized, flow is directed from port 3 to port 2 and from port 4 to port 1.

SV9-10-F



Operation

In the de-energized (center) position, port 1, port 2, and port 4 are open to each other while port 3 is blocked. When solenoid 1 (S1) is energized, flow is directed from port 3 to port 4 and from port 2 to port 1. When solenoid 2 (S2) is energized, flow is directed from port 3 to port 2 and from port 4 to port 1.

Performance data

Ratings and specifications

Performance data is typical with fluid at 21,8 cST (105 SUS) and 49°C (120°F)

Typical application pressure (all ports)	210 bar (3000 psi)
Fatigue pressure	3,000 psi per NFPA/T2-6-1 R2-2000
Rated burst pressure	(626 bar) 9090 psi per NFPA/T2-6-1 R2-2000
Max Flow A	19 L/min (5 USgpm)
Max Flow B, E, F	23 L/min (6 USgpm)
Temperature range	-40° to 120°C (-40° to 248°F)
Coil power	B, E, F has 26W
Cavity	C-10-4
Weight including coil	0.95Kg (2.1 lbs)
Internal leakage	246 cm ³ /min (15 in ³ /min) max. @ 210 bar (3000 psi)
Fluids	All general purpose hydraulic fluids such as: MIL-H-5606, SAE 10, SAE 20 etc.
Filtration	Cleanliness code 18/16/13
Seal kit	889625 (Buna-N), 566080 (Viton®)

Viton is a registered trademark of E.I. DuPont

Endurance tested to 1 million cycles at full rated flow and pressure.

Where measurements are critical request certified drawings. We reserve the right to change specifications without notice.

SV9-10 - Solenoid valve

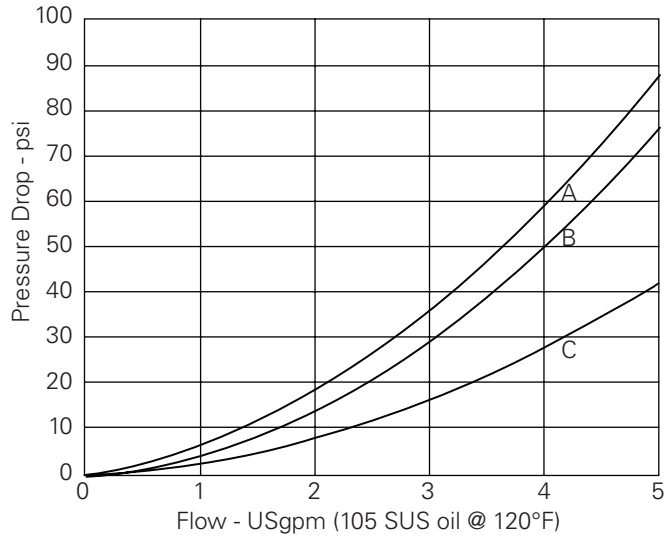
Spool type, 4-way, 2-position
Up to 23 L/min (6 USgpm) * 210 bar (3000 psi)

A

Pressure drop

SV9-10-A

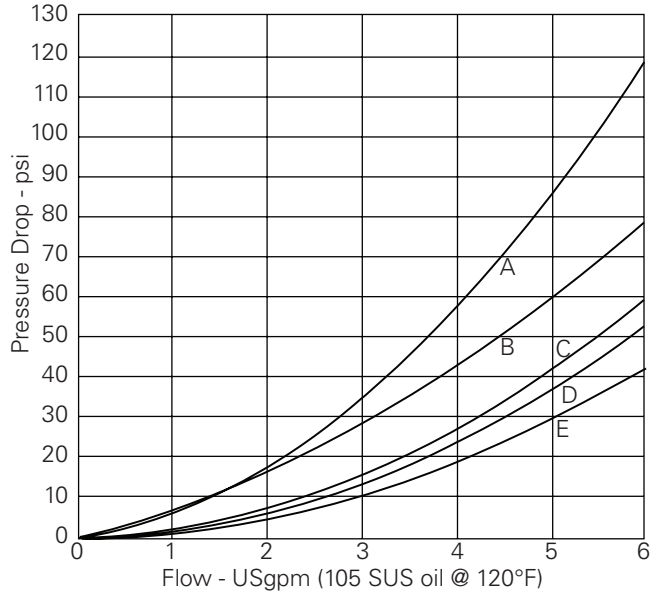
Cartridge only



- A** - Port 3 to port 1, de-energized
- B** - Port 3 to port 2, port 3 to port 4
- C** - Port 2 to port 1, port 4 to port 1

SV9-10-B

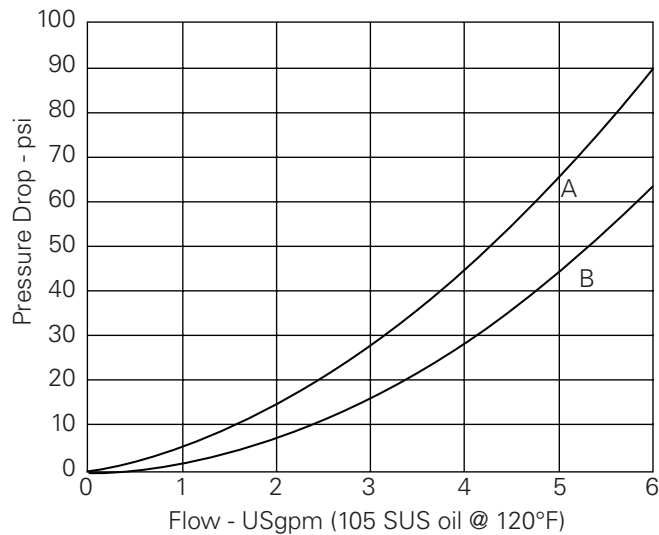
Cartridge only



- A** - Port 3 to port 1, de-energized
- B** - Port 3 to port 2, port 3 to port 4
- C** - Port 4 to port 1, port 2 to port 1, de-energized
- D** - Port 2 to port 1
- E** - Port 4 to port 1

SV9-10-E

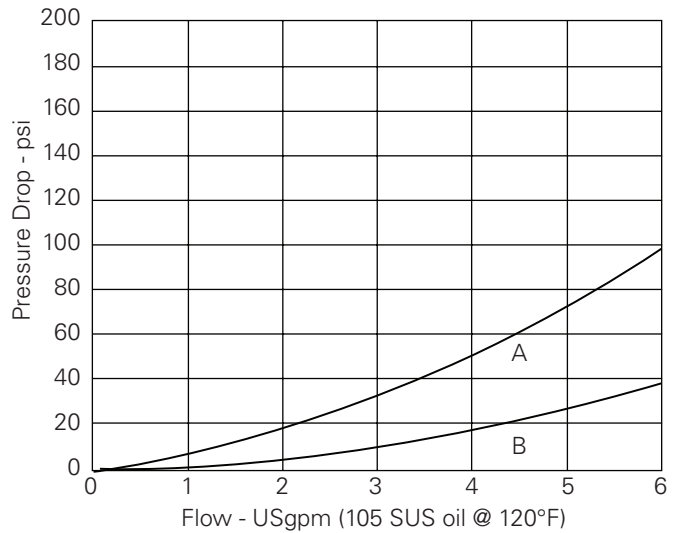
Cartridge only



- A** - Port 3 to port 2, port 3 to port 4
- B** - Port 2 to port 1, port 4 to port 1

SV9-10-F

Cartridge only



- A** - Port 3 to port 2, port 3 to port 4
- B** - Port 2 to port 1, port 4 to port 1

Where measurements are critical request certified drawings. We reserve the right to change specifications without notice.

SV9-10 - Solenoid valve

Spool type, 4-way, 2-position
Up to 23 L/min (6 USgpm) • 2.10 bar (3000 psi)

A

Model code



1 Function
SV9 - Solenoid valve

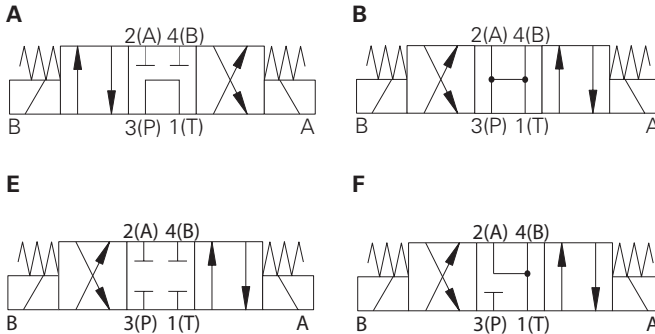
2 Size
10 - 10 size

3 Seal material
Blank - Buna-N
V - Viton

5 Manual override option
Blank - No manual override
M - Manual override

6 Housing material
0 - Cartridge only
A - Aluminum
S - Steel

4 Spool center condition



7 Port sizes

Code	Port size	Housing number	
		Aluminium light duty	Aluminium fatigue rated
Blank		Cartridge only	
3B	3/8" BSPP	02-179705	
2G	1/4" BSPP		876709
3G	3/8" BSPP		876715
6H	SAE 4		876708
8H	SAE 6		876713
6T	SAE 6	566161	

See section J for housings.

8 Voltage rating ¹

00 - No coil
012D - 12VDC
024D - 24VDC
024A - 24VAC
115A - 115VAC
230A - 230VAC
012B - 12VDC/w diode*
024B - 24VDC/w diode*

*Optional arc suppression diode.

9 Connector types ¹

Blank - No coil
G - ISO 4400 DIN 43650
W - Leadwire
N - Deutsch (DC only)
Y - Amp JR (DC only)
D - Metripack 150 male (DC only)
J - Metripack 280 male (DC only)

10 Coil series ¹

Blank - No Coil
J - 10 series, 23W

11 Coil special features ¹

Blank - None

12 Valve Special features ¹

00 - None

(Only required if valve has Special features omitted if "00".)

¹ These model digits are not stamped on the valve.

Where measurements are critical request certified drawings. We reserve the right to change specifications without notice.

Dimensions
mm (inch)

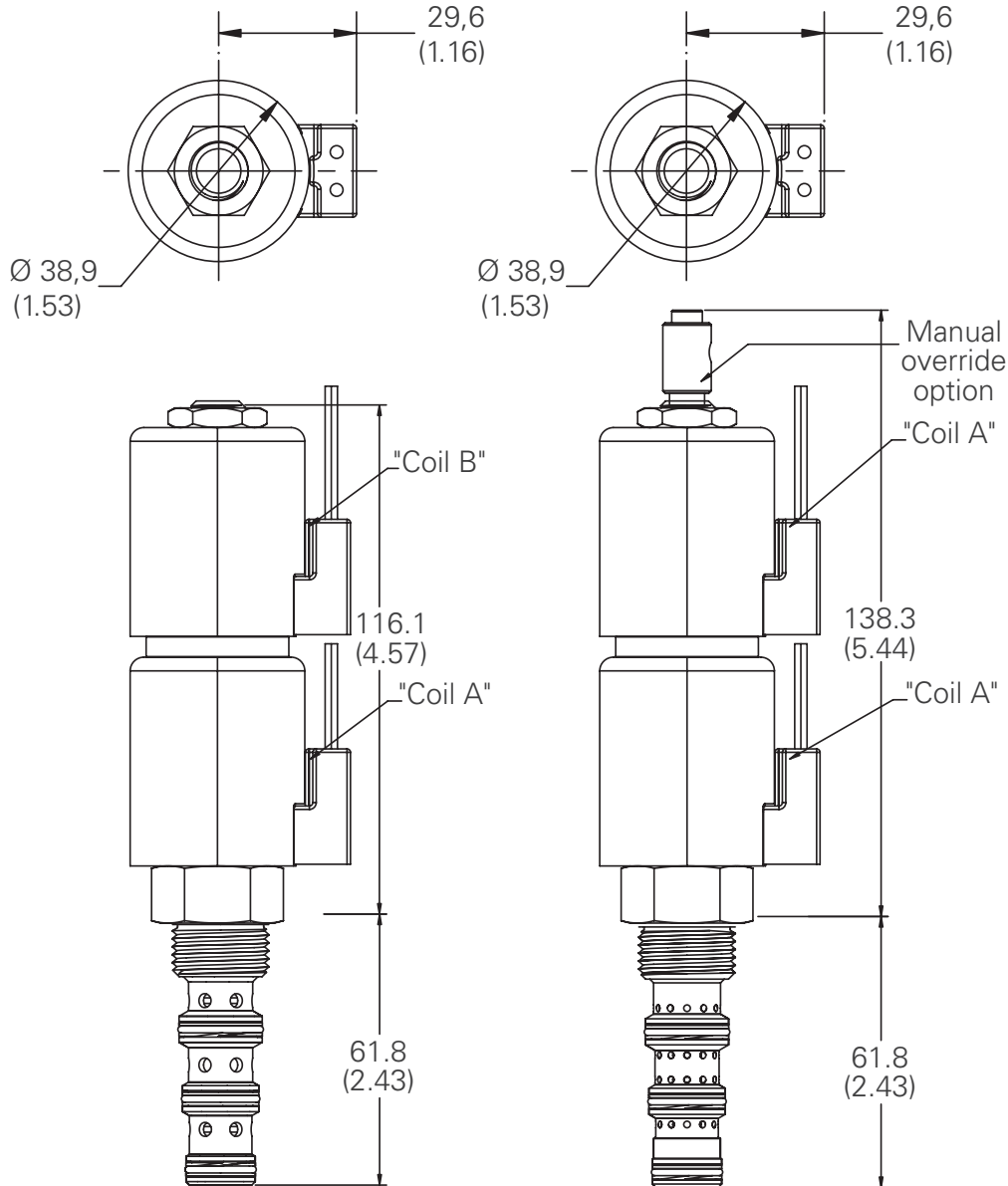
Valve is shown with "W" coil.
See other coils in Section C.

This valve uses the J series,
23 W coil.

Spare parts

Coil nut	565558
Coil spacer	02-179226

A



Where measurements are critical request certified drawings. We reserve the right to change specifications without notice.