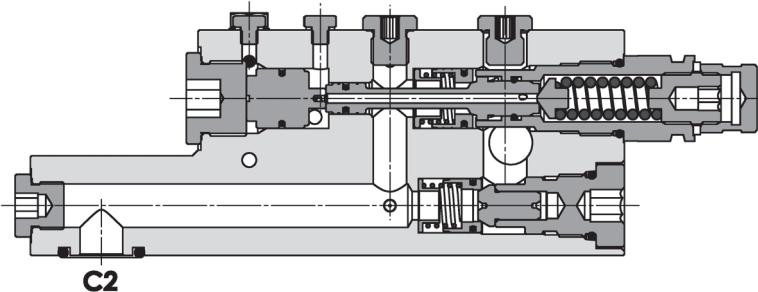
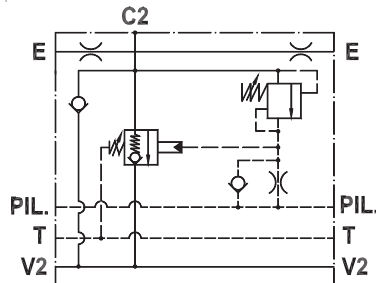




Valvola di blocco e controllo portata per bracci, montaggio a flangia
Flow check and metering valve for booms, gasket mounted

Rev.03-2010/09

**SPECIFICHE TECNICHE**

Materiali: corpo in acciaio zincato. I componenti interni sono in acciaio trattato termicamente.

Portata max.: 250 l/min

Pressione max.: 420 bar

Regolazione pressione: mediante vite

Campo di regolazione pressione: vedere pag.02

Peso: 8.100 Kg

TECHNICAL SPECIFICATIONS

Materials: body is in steel zinc plated. Internal parts are in hardened steel.

Rated flow: up to 250 l/min

Max. pressure: 420 bar

Adjustment means: leakproof screw adjustment

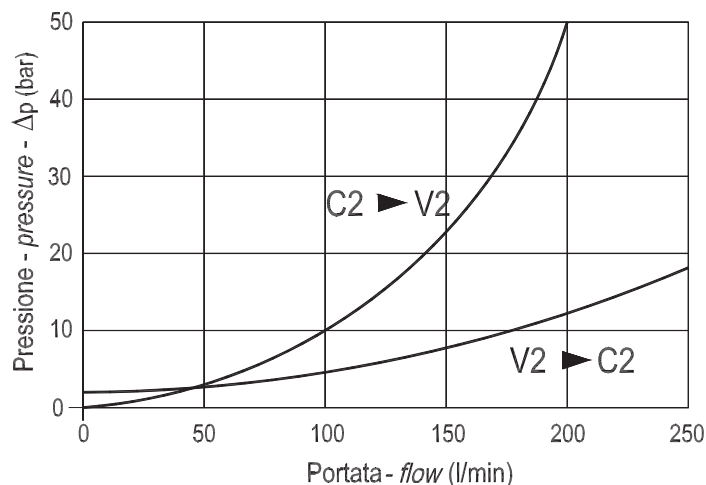
Adjustable pressure range: see page 02

Weight: 8.100 Kg

DIAGRAMMA PERDITE DI CARICO - PRESSURE DROP CURVES

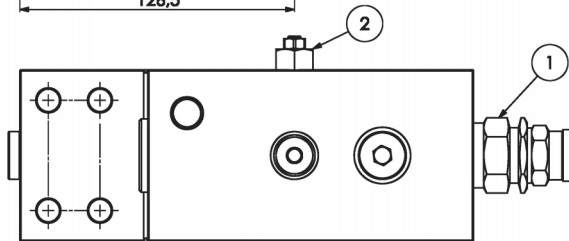
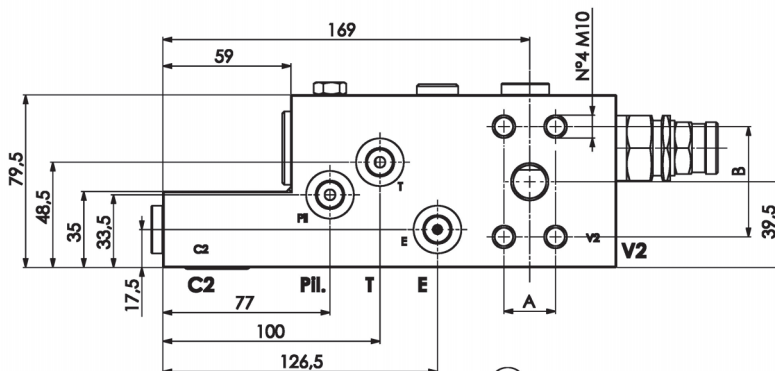
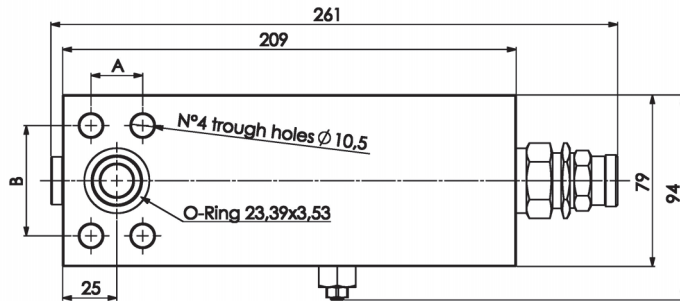
Viscosità olio 24 mm²/sec. (3,5 °E)
 Temperatura 50 °C

Oil viscosity 24 mm²/sec. (3,5 °E)
 Temperature 50 °C



Valvola di blocco e controllo portata per bracci, montaggio a flangia
Flow check and metering valve for booms, gasket mounted

Rev.03-2010/09



MOLLE VALVOLA (1) - SPRINGS VALVE (1)

Codice Code	Campo taratura min.-max. bar Adjustable pressure range bar	Increment. press. bar/giro vite Pressure increase bar/turn	Taratura standard bar Standard setting bar
05	3.5 - 19.5	3.5	7.5

MOLLE VALVOLA (2) - SPRINGS VALVE (2)

Codice Code	Campo taratura min.-max. bar Adjustable pressure range bar	Increment. press. bar/giro vite Pressure increase bar/turn	Taratura standard bar Standard setting bar
50	250 - 500	198	350

TIPO TYPE	A	B	C2 - V2	E - PIL - T	PESO WEIGHT
	mm	mm	SAE	BSPP	Kg
FPEXC-250-S-3/4...SAE3000	22.2	47.6	3/4" SAE3000	1/4"	8.000
FPEXC-250-S-3/4...SAE6000	23.8	50.8	3/4" SAE6000	1/4"	8.000

ESEMPIO DI ORDINAZIONE - ORDERING CODE EXAMPLE

F P E X C **2 5 0** **S** **3 / 4** **1 F** **S A E 6 0 0 0** **0 5** **5 0**

SAE 6000
 SAE 3000

Dimensione flangia - flange dimension