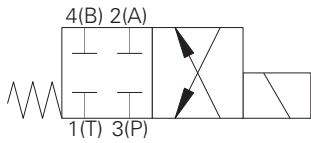


S541 - Solenoid valve

Spool type, 4-way, 2-position
Up to 30 L/min (8 USgpm) • 210 bar (3000 psi)

A



Operation

In the de-energized position all ports are blocked. In the energized position flow is allowed from port 3 to port 4 and from port 2 to port 1.

Performance data

Ratings and specifications

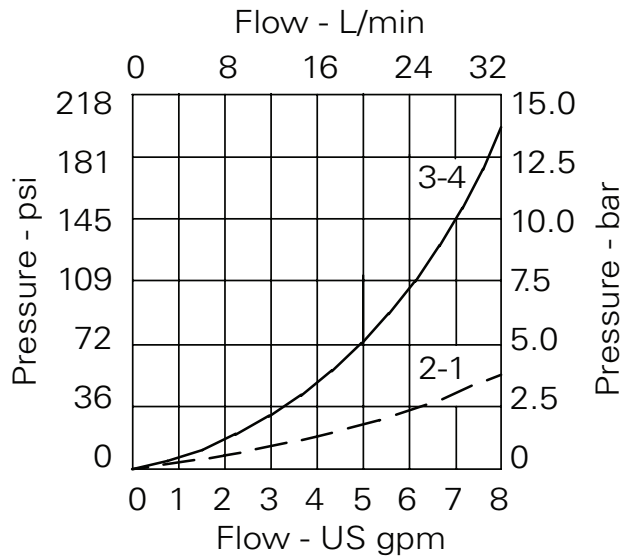
Performance data is typical with Viscosity 32 cST (150 SSU)

| | |
|---|--|
| Max working pressure | 210 bar (3000 psi) |
| Rated flow | See performance graphs |
| Nominal flow at $\Delta P = 5$ bar (70 psi) | 20 L/min (5 USgpm) |
| Internal leakage | Less than 120 ml/min 210 bar differential |
| Temperature range | -30° to +120°C (-22° to +248°F) |
| Cavity | C-10-4 (See Section M) |
| Torque cartridge into cavity | 30 Nm (22 lbs ft) |
| Mounting position | Unrestricted |
| Seal material | Nitrile with PTFE back up rings |
| Filtration | BS5540/4 Class 18/13 (25 micron or better) |
| Nominal viscosity range | 15 to 250 cSt |
| Coil weight | 0.3 kg (0.6 lbs) |
| Cartridge weight | 0.13 kg (0.3 lbs) |
| Coil part number | C16-*.*/19 |
| Coil voltage available | 12, 24 VDC, 110, 220, VAC* |

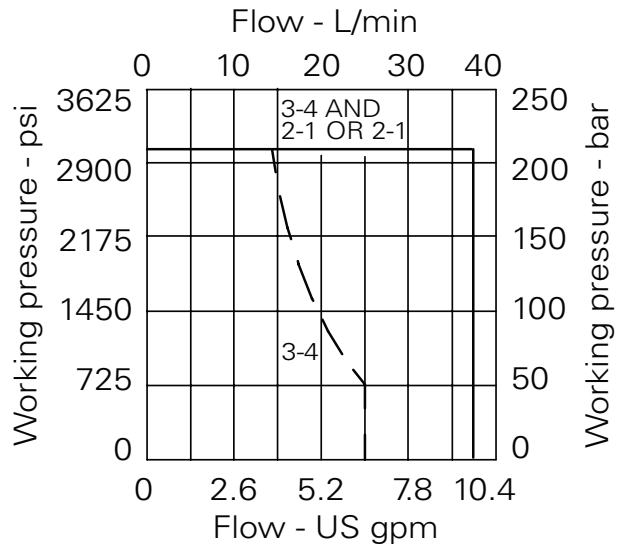
Viton is a registered trademark of E.I. DuPont

*AC coils must be used with a rectifying connector

Pressure drop



Performance



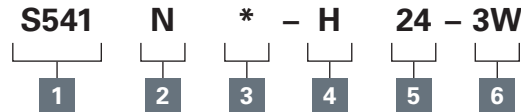
Where measurements are critical request certified drawings. We reserve the right to change specifications without notice.

S541 - Solenoid valve

Spool type, 4-way, 2-position
Up to 30 L/min (8 USgpm) • 210 bar (3000 psi)

A

Model code



1 Function

S541

2 Seal material

N - Nitrile

V - Viton

3 Manual Override

2 - Screw

(Consult factory for availability).
See page A-960.

4 Coil Termination

H - DIN43650

F - Flying leads

DM - Deutsch moulded

Other terminations available on request

5 Voltage

12 - 12 VDC

24 - 24 VDC

110 - 110 VAC

220 - 220 VAC

6 Port size

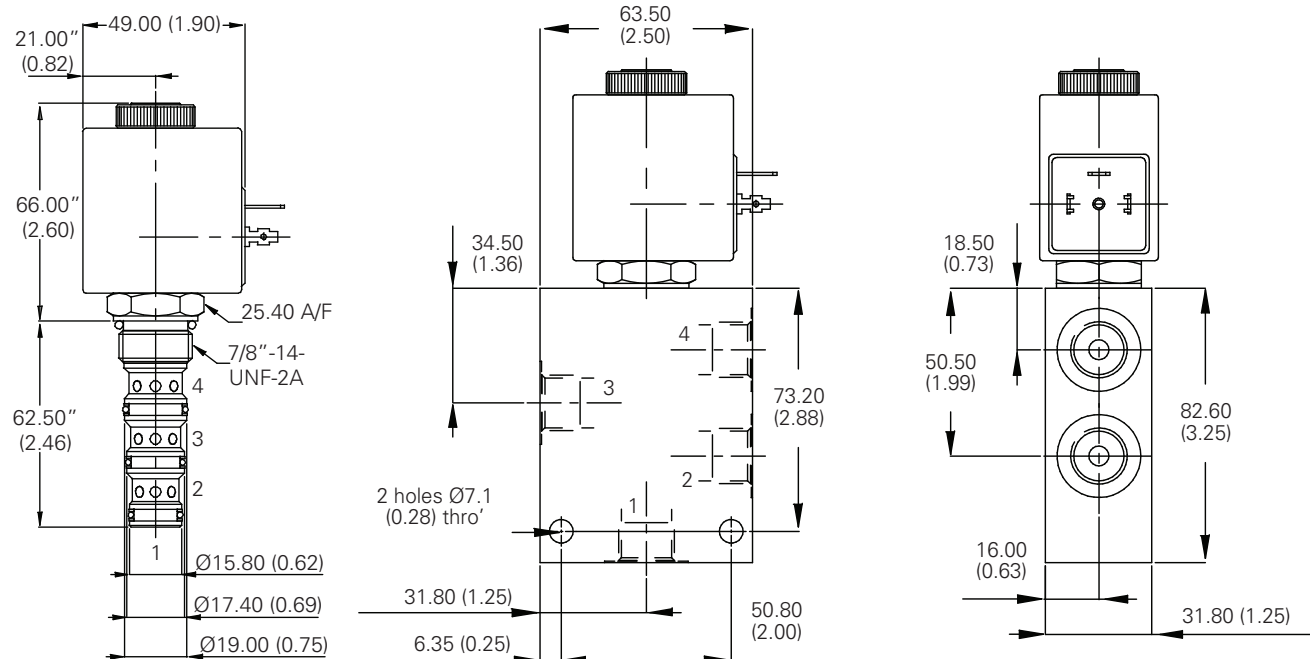
| Code | Port size | Housing number - Body only |
|-----------|-----------|----------------------------|
| | | Aluminium |
| 3W | 3/8" BSP | B19240 |
| 4W | 1/2" BSP | B19228 |
| 8T | 1/2" SAE | B19229 |

Dimensions - mm (inch)

Cartridge only

Basic Code **S541**

Installation drawing



Where measurements are critical request certified drawings. We reserve the right to change specifications without notice.