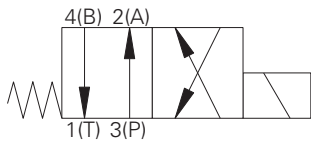


S542 - Solenoid valve

Spool type, 4-way, 2-position
Up to 35 L/min (9 USgpm) • 210 bar (3000 psi)

A



Operation

In the de-energized position this valve allows flow from port 4 to port 1 and from port 3 to port 2. In the energized position flow is allowed from port 3 to port 4 and from port 2 to port 1.

Performance data

Ratings and specifications

Figures based on Viscosity 32 cST (150 SSU)

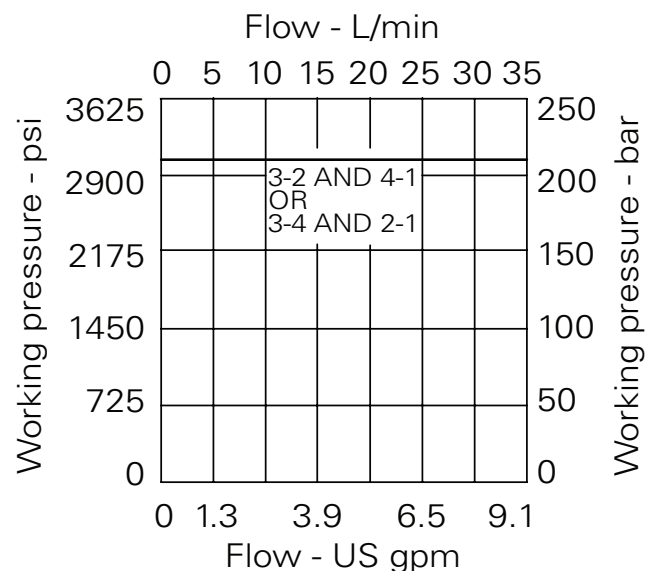
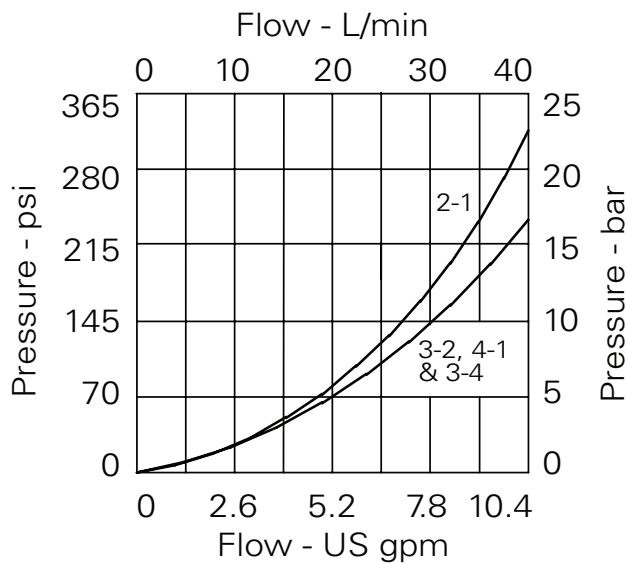
Max working pressure	210 bar (3000 psi)
Rated flow	See performance graphs
Nominal flow at $\Delta P = 5$ bar (70 psi)	20 L/min (5 USgpm)
Internal leakage	Less than 120 ml/min past each land 210 bar differential at 32 cSt
Temperature range	-30° to +120°C (-22° to +248°F)
Cavity	C-10-4 (See Section M)
Electrical data	See coil data sheet
Torque cartridge into cavity	30 Nm (22 lbs ft)
Mounting position	Unrestricted
Fluids	Most general purpose hydraulic fluids such as MIL-H-5606, SAE 10, SAE 20 etc.
Seal material	Standard nitrile with PTFE back up rings
Filtration	BS5540/4 Class 18/13 (25 micron or better)
Nominal viscosity range	15 to 250 cSt
Coil weight	0.3 kg (.6 lbs)
Cartridge weight	0.205 kg (.45 lbs)
Coil part number	C16-*/19
Coil voltage available	12, 24 VDC, 110, 220, VAC*

Viton is a registered trademark of E.I. DuPont

*AC coils must be used with a rectifying connector

Pressure drop

Performance

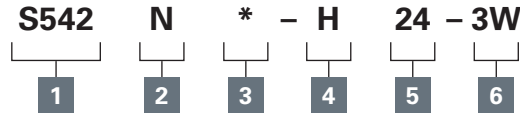


Where measurements are critical request certified drawings. We reserve the right to change specifications without notice.

S542 - Solenoid valve

Spool type, 4-way, 2-position
Up to 35 L/min (9 USgpm) • 210 bar (3000 psi)

Model code



A

1 Function

S542

2 Seals

N - Nitrile
V - Viton

3 Manual Override

2 - Screw
(Consult factory for availability).
See page A-960

4 Coil Termination

H - DIN43650
F - Flying leads
DM - Deutsch moulded
Other terminations available
on request

5 Voltage

12 - 12 VDC
24 - 24 VDC
110 - 110 VAC
220 - 220 VAC

6 Port sizes

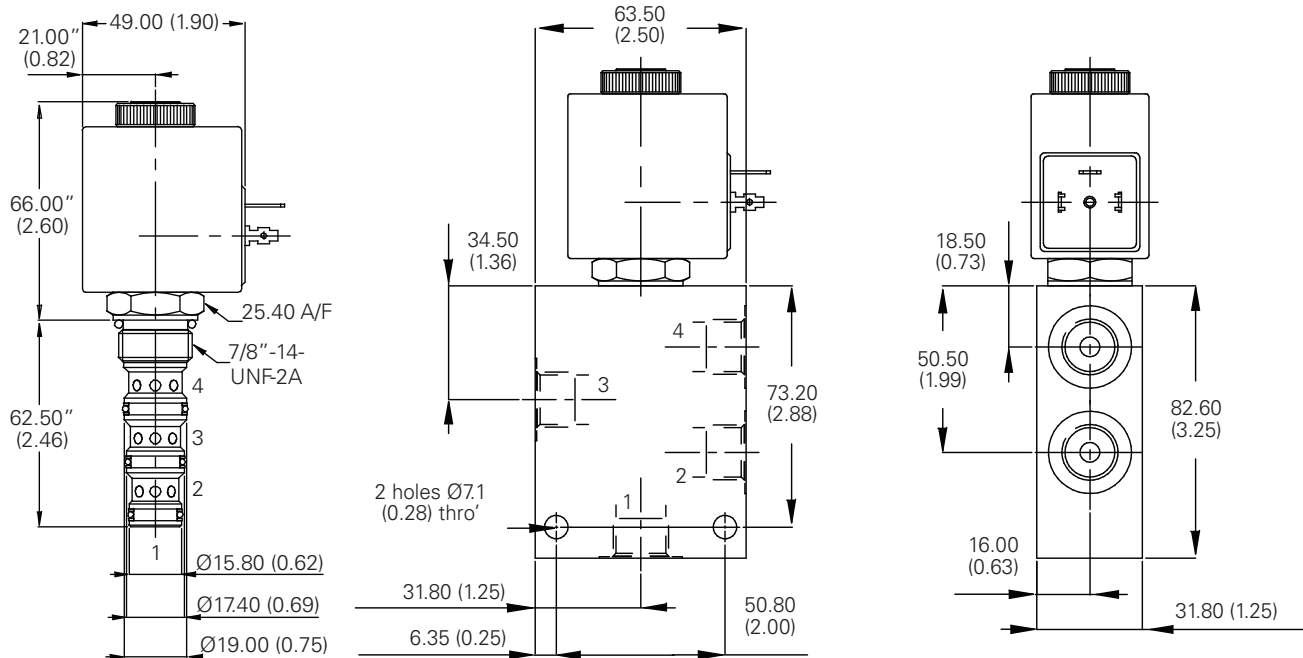
Code	Port size	Housing number - Body only
		Aluminium
3W	3/8" BSP	B19240
4W	1/2" BSP	B19228
8T	1/2" SAE	B19229

Dimensions - mm (inch)

Cartridge only

Basic Code **S542**

Installation drawing



Where measurements are critical request certified drawings. We reserve the right to change specifications without notice.