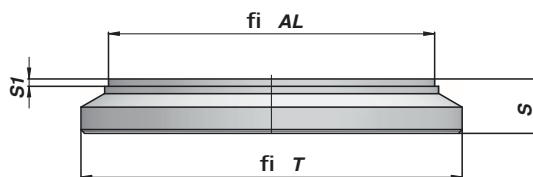
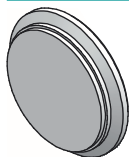


CF

FOND
END-PLUG
FONDO

| Code Code Código | ØAL | ØT | S | S1 | kg | Boîte Box Cajaconfeccionada | Pcs Pcs Pzs |
|------------------------|-----|-----|----|----|------|-----------------------------------|-------------------|
| CF00025035 | 25 | 35 | 7 | 2 | 0,04 | Z0CCF00025035 | 250 |
| CF00030040 | 30 | 40 | 8 | 2 | 0,06 | Z0CCF00030040 | 250 |
| CF00032042 | 32 | 42 | 8 | 2 | 0,10 | Z0CCF00032042 | 250 |
| CF00035045 | 35 | 45 | 10 | 2 | 0,11 | Z0BCF00035045 | 200 |
| CF00040050 | 40 | 50 | 10 | 2 | 0,13 | Z0ACF00040050 | 150 |
| CF00045055 | 45 | 55 | 10 | 2 | 0,16 | Z00CF00045055 | 100 |
| CF00050060 | 50 | 60 | 10 | 2 | 0,19 | Z00CF00050060 | 100 |
| CF00055065 | 55 | 65 | 12 | 2 | 0,28 | Z50CF00055065 | 50 |
| CF00060070 | 60 | 70 | 12 | 2 | 0,33 | Z50CF00060070 | 50 |
| CF00063073 | 63 | 73 | 12 | 2 | 0,35 | Z50CF00063073 | 50 |
| CF00065075 | 65 | 75 | 12 | 2 | 0,38 | Z50CF00065075 | 50 |
| CF00065080 | 65 | 80 | 12 | 2 | 0,40 | Z50CF00065080 | 50 |
| CF00070080 | 70 | 80 | 12 | 2 | 0,43 | Z50CF00070080 | 50 |
| CF00070085 | 70 | 85 | 12 | 2 | 0,45 | Z25CF00070085 | 25 |
| CF00075090 | 75 | 90 | 12 | 2 | 0,53 | Z25CF00075090 | 25 |
| CF00080090 | 80 | 90 | 12 | 2 | 0,55 | Z25CF00080090 | 25 |
| CF00080095 | 80 | 95 | 12 | 2 | 0,58 | Z25CF00080095 | 25 |
| CF00085100 | 85 | 100 | 15 | 2 | 0,77 | Z25CF00085100 | 25 |
| CF00090105 | 90 | 105 | 15 | 2 | 0,86 | Z25CF00090105 | 25 |
| CF00100115 | 100 | 115 | 15 | 2 | 1,05 | Z25CF00100115 | 25 |
| CF00110125 | 110 | 125 | 15 | 2 | 1,34 | | |
| CF00110130 | 110 | 130 | 15 | 2 | 1,40 | | |
| CF00120140 | 120 | 140 | 18 | 2 | 2,00 | | |
| CF00125145 | 125 | 145 | 18 | 2 | 2,11 | | |
| CF00140160 | 140 | 160 | 18 | 2 | 2,67 | | |
| CF00150170 | 150 | 170 | 20 | 2 | 3,33 | | |
| CF00160180 | 160 | 180 | 20 | 2 | 3,79 | | |

MATERIEL - MATERIAL:

ACIER - STEEL - ACERO S355JO (Fe510C) - S355 JR (A105)

En CAS DE PICS DE PRESSION NOUS VOUS RECOMMANDONS DE SOUDER DES FIXATIONS POUR EVITER DEFORMATION S DU FOND. En ALTERNATIVE VOUS POUVEZ EMPLOYER LES FONDS INTERNES TYPE "CFI"

THESE PLUGS CAN BE UNDER PEAK PRESSURE. WE RECOMMEND TO WELD ENDS TO ACHIEVE EXTRA RIGIDITY OTHERWISE USE INTERNAL END-PLUGS "CFI" TYPE.

ESTOS FONDOS PUEDEN PLEGAR EN CASO DE PRESION DE PICO. RECOMANDAMOS DE SOLDAR FIJACIONES PARA AUMENTAR LA RIGIDEZ, O BIEN DE UTILIZAR LOS FONDOS LADO INTERIOR TIPO "CFI".

En CAS DE TRAVAIL INTENSIF, ON VOUS CONSEILLE D'UTILISER LES FONDS SERIE "CFPM".

In CASE OF CONTINUOUS WORK PLEASE USE "CFPM" END-PLUGS.

En CASO DE TRABAJO CONTINUADO RECOMANDAMOS DE UTILIZAR LOS FONDOS "CFPM".